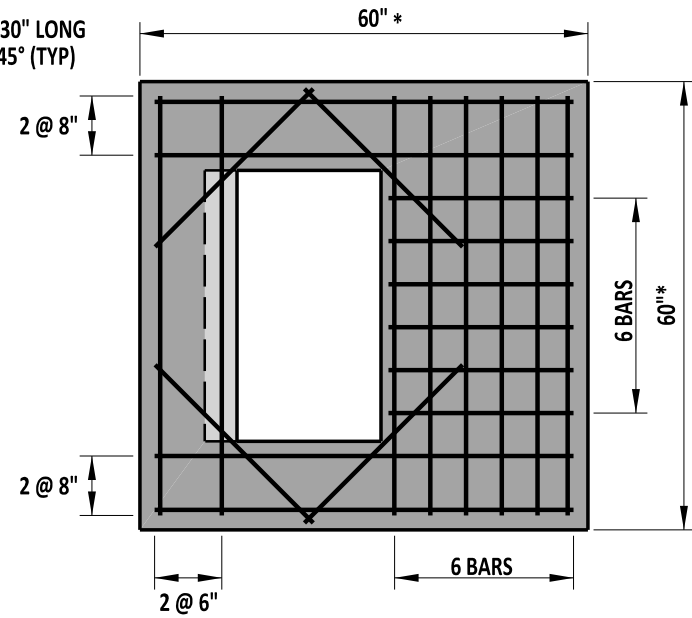
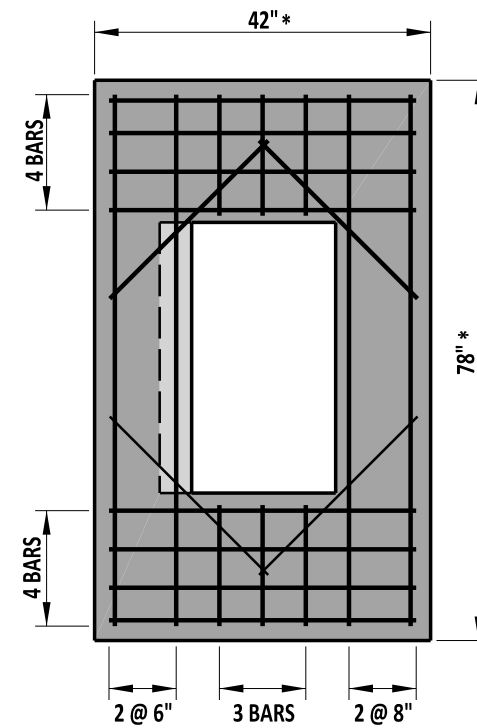


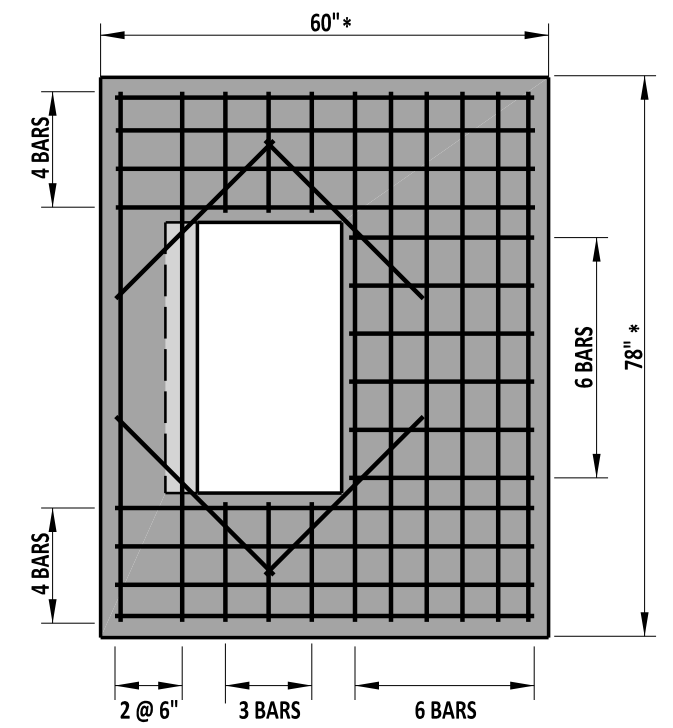
48" x 30" INLET



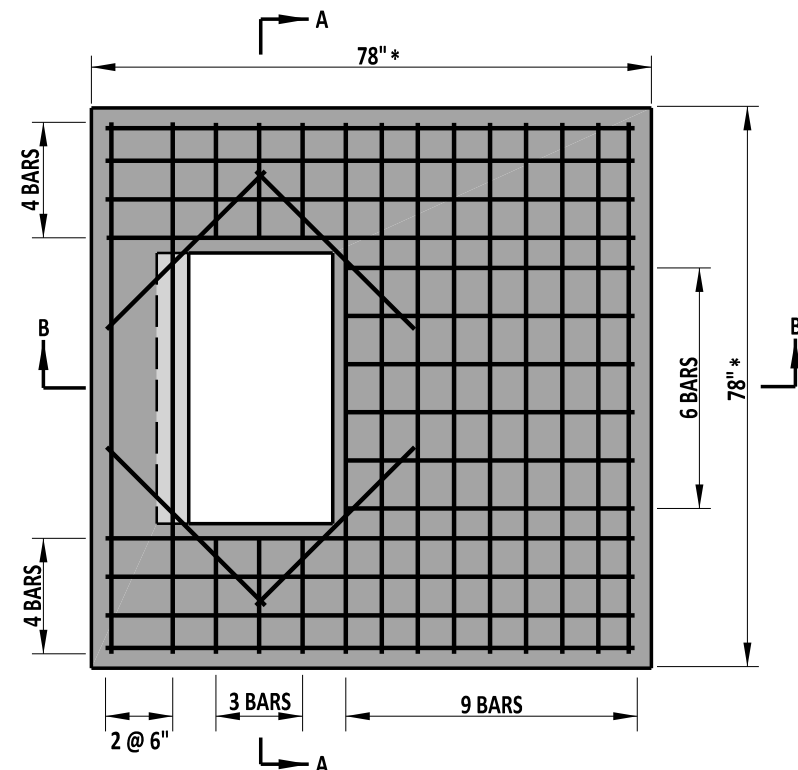
48" x 48" INLET



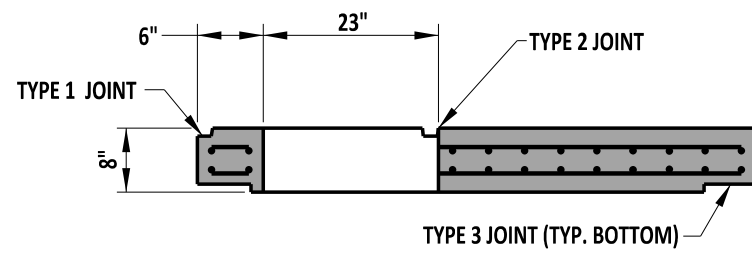
66" x 30" INLET



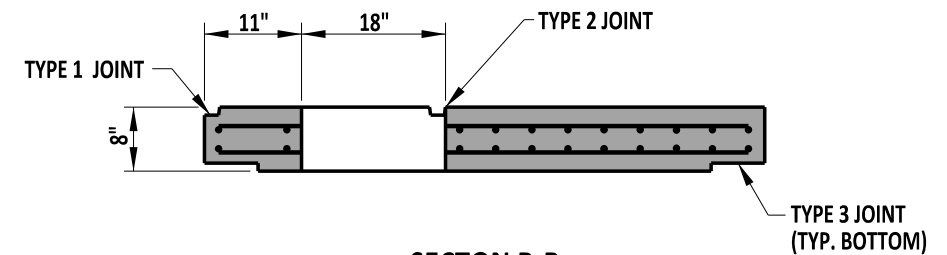
66" x 48" INLET



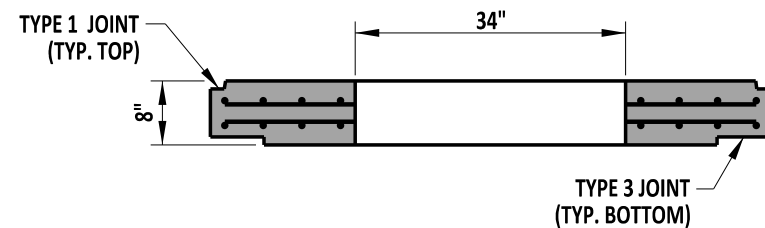
66" x 66" INLET



**SECTION B-B
FOR TYPE B TOP UNITS**



**SECTION B-B
FOR TYPES A, C, D, & E TOP UNITS**



SECTION A-A

- NOTES :**
- 1). RELOCATE ENCRANCHING REINFORCING BARS WHEN USING TYPE B UNIT.
 - 2). USE PRECAST COVER SLABS THAT ARE SIZED TO FIT INLET BOX OUTER DIMENSIONS (SEE DIMENSIONS DENOTED WITH *).
 - 3). ALL BARS ARE TO BE #5 SPACED @ 6" UNLESS NOTED OTHERWISE. USE 0.12 SQ. IN. PER FOOT (MIN.) TOP HORIZONTAL REINFORCEMENT IN BOTH DIRECTIONS.
 - 4). MINIMUM BAR COVER = 1 1/2".
 - 5). JOINTS ARE OMITTED FROM PLAN VIEWS FOR CLARITY.




 ENGINEERING SUPPORT DATE 09/01/2020
RECOMMENDED

DRAINAGE INLET COVER SLAB

STANDARD NO. D-5 (2020) SHT. 4 OF 9

REVIEWED 
 DEPUTY DIRECTOR - DESIGN DATE 09/01/2020
 APPROVED 
 CHIEF ENGINEER DATE 09/01/2020