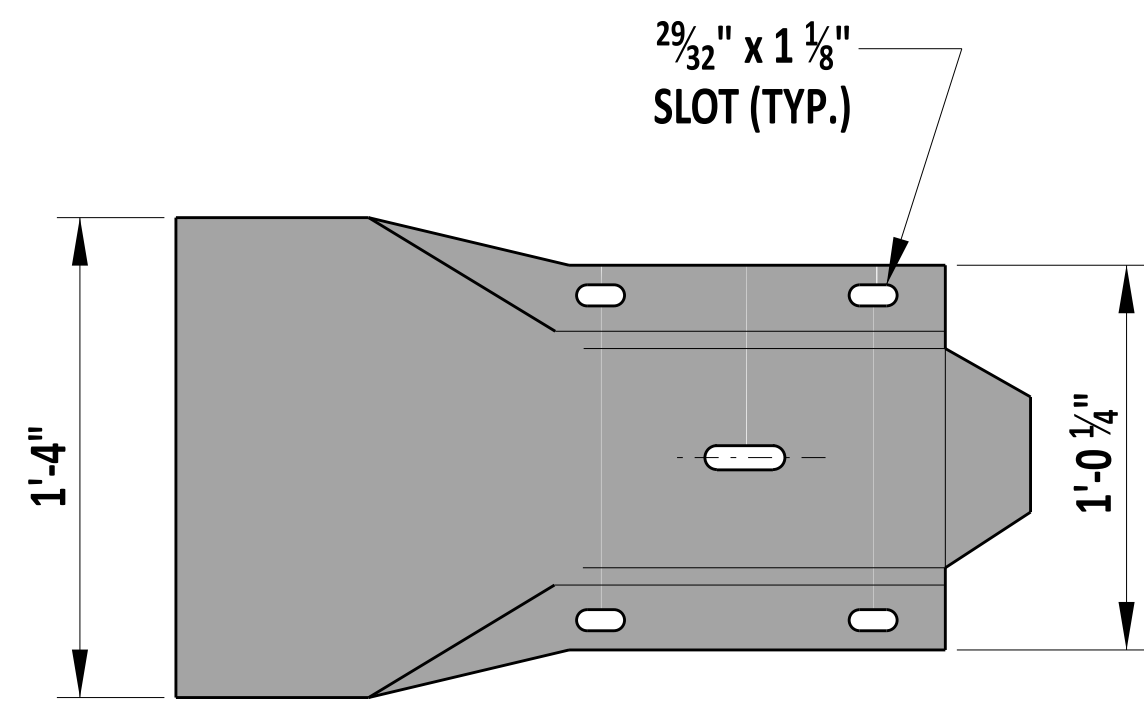
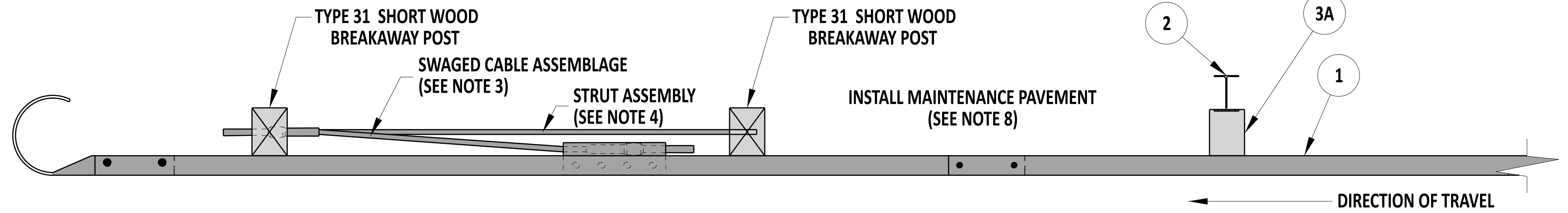


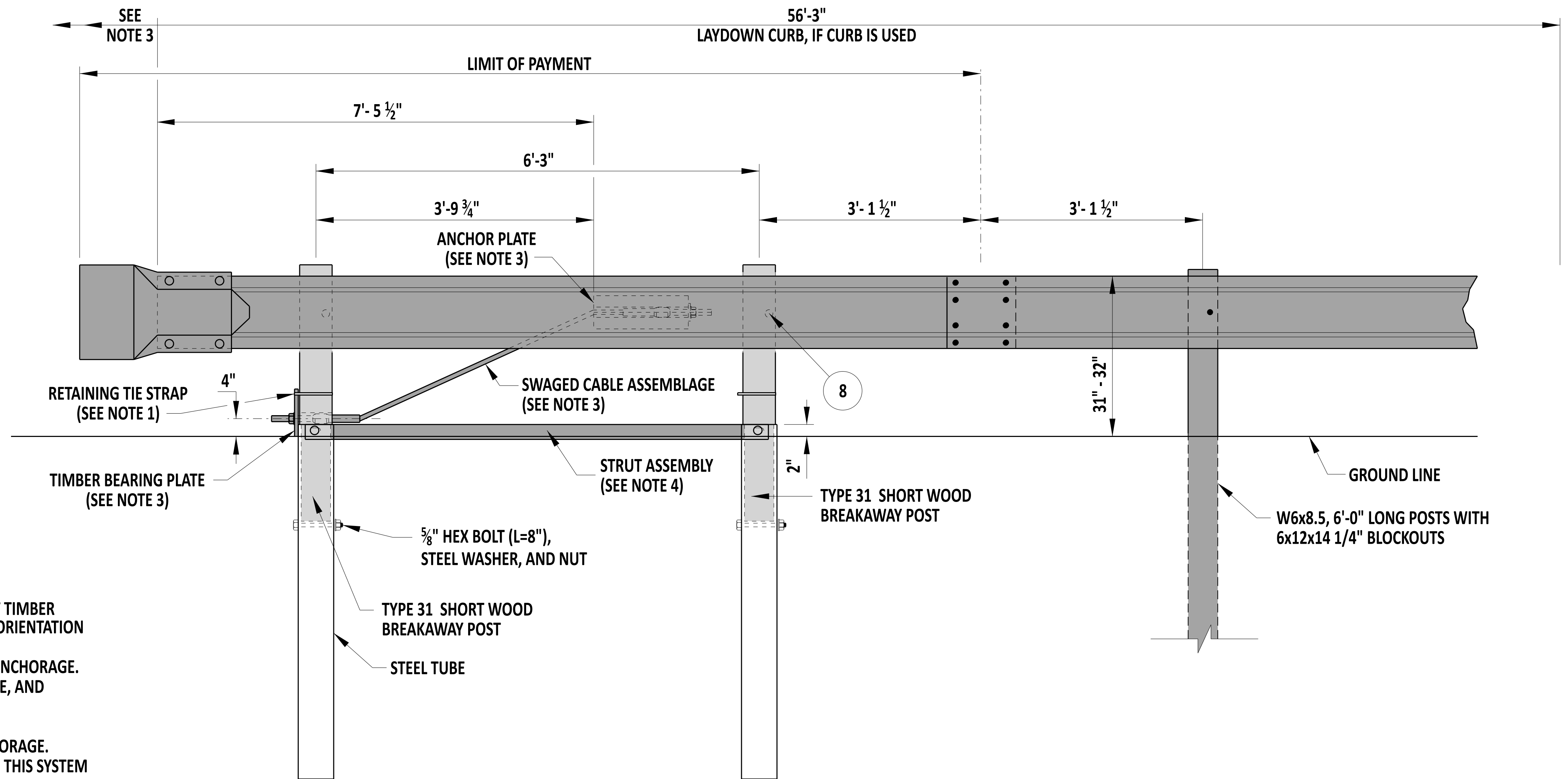
END SECTION PLAN



END SECTION ELEVATION



PLAN VIEW



ELEVATION VIEW

NOTES:

- 1). PLACE A 1/2" WIDE GALVANIZED RETAINING TIE STRAP AROUND THE SHORT TIMBER BREAKAWAY POST AND TIMBER BEARING PLATE TO ENSURE THE PROPER ORIENTATION OF THE TIMBER BEARING PLATE.
- 2). IF CURB IS USED, EXTEND LAYDOWN CURB 50'-0" DOWNSTREAM OF THE ANCHORAGE.
- 3). REFER TO DETAIL B-13, SHEET 8 OF 12, FOR SWAGED CABLE, ANCHOR PLATE, AND TIMBER BEARING PLATE DETAILS.
- 4). REFER TO DETAIL B-13, SHEET 11 OF 12, FOR STRUT ASSEMBLY DETAIL.
- 5). DO NOT PLACE GUARDRAIL REFLECTORS WITHIN THE LIMITS OF THE ANCHORAGE.
- 6). THIS IS DESIGNED TO ACT AS A DOWNSTREAM END ANCHOR. DO NOT USE THIS SYSTEM WHERE HEAD ON IMPACTS ARE EXPECTED.
- 7). MASH COMPLIANT SYSTEM - FHWA ELIGIBILITY LETTER B-256
- 8). SEE DETAIL B-1, SHEET 3 FOR MAINTENANCE PAVEMENT DEPTHS AND MATERIALS. INSTALL MAINTENANCE PAVEMENT WITHIN THE LIMITS OF PAYMENT, TO THE FULL WIDTH BETWEEN THE EDGE OF PAVEMENT, OR BACK OF CURB IF CURB IS INSTALLED, TO A DISTANCE OF 8" BEHIND THE BACK OF POST.



Andrew Short
 ENGINEERING SUPPORT
 12/22/2023
 DATE
RECOMMENDED

END ANCHORAGE, TYPE 31

| | | | | | |
|--------------|------------|------|---|----|---|
| STANDARD NO. | B-4 (2024) | SHT. | 1 | OF | 1 |
|--------------|------------|------|---|----|---|

| | | |
|----------|--|--------------------------|
| REVIEWED | <i>[Signature]</i> DEPUTY DIRECTOR - DESIGN | 22 December 2023 DATE |
| APPROVED | <i>[Signature]</i> CHIEF ENGINEER | 01/11/2024 DATE |