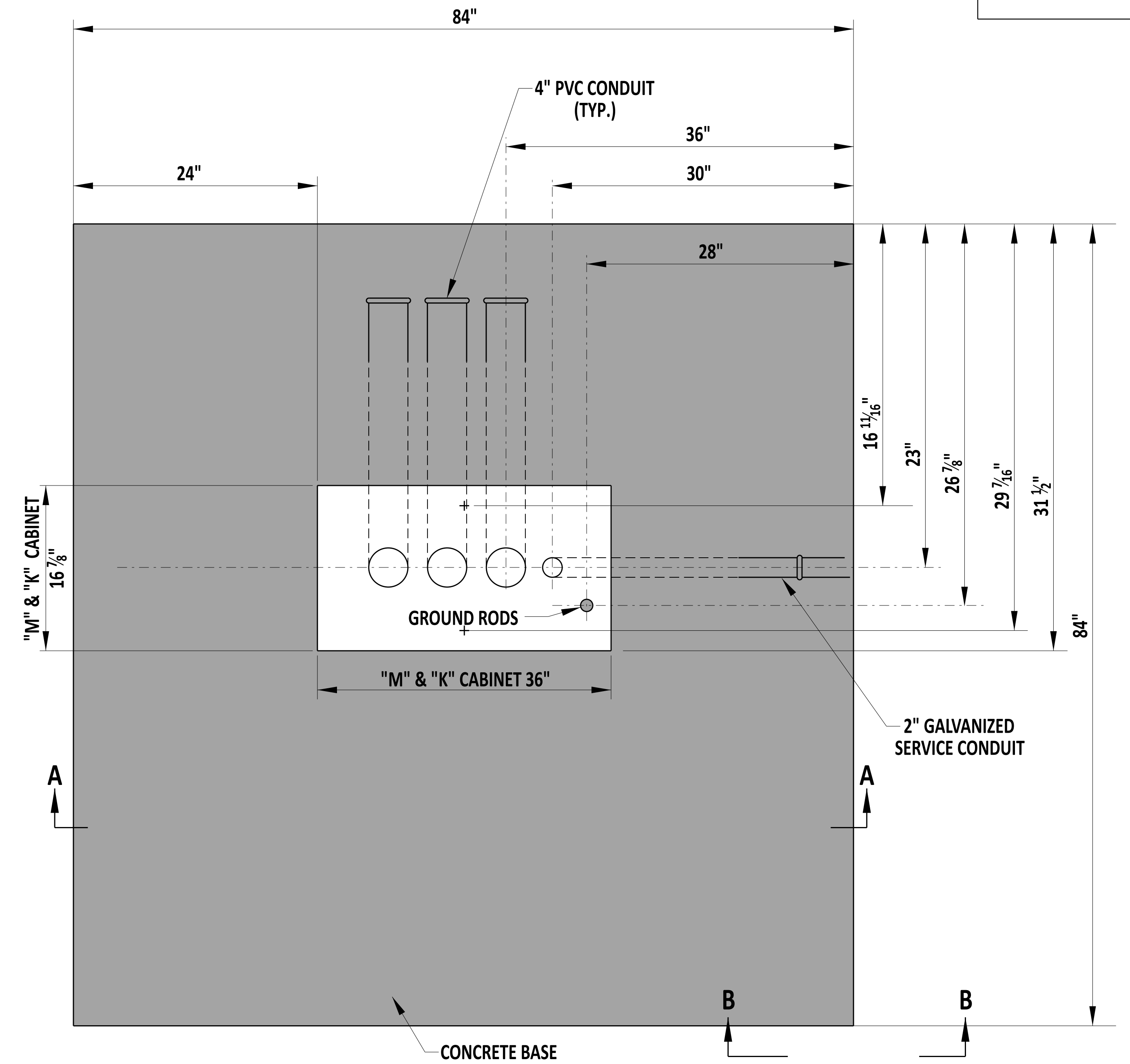


**"F" CABINET  
PLAN VIEW**



**"M" & "K" CABINET  
PLAN VIEW**

**NOTE:**

- 1). CONDUITS SHALL BE EVENLY SPACED, WITH MINIMUM 2" WIDTH SPACING ESTABLISHED BETWEEN ALL CONDUITS.
- 2). FOR VIEW OF SECTION A-A AND SECTION B-B, SEE DETAIL T-4, SHEET 2 OF 2.
- 3). IF FULL SIZE OF BASE CANNOT BE ESTABLISHED, A 56"X 58" BASE SHALL BE INSTALLED PER DELDOT'S SIGNAL CONSTRUCTION INSPECTOR.



*Andrew Short*  
ENGINEERING SUPPORT      12/22/2023  
**RECOMMENDED**

**CABINET BASES, TYPES M, K, & F**

STANDARD NO.      T-4 (2024)      SHT.      1      OF      2

**REVIEWED**      *[Signature]*      22 December 2023  
DEPUTY DIRECTOR - DESIGN      DATE

**APPROVED**      *[Signature]*      01/11/2024  
CHIEF ENGINEER      DATE