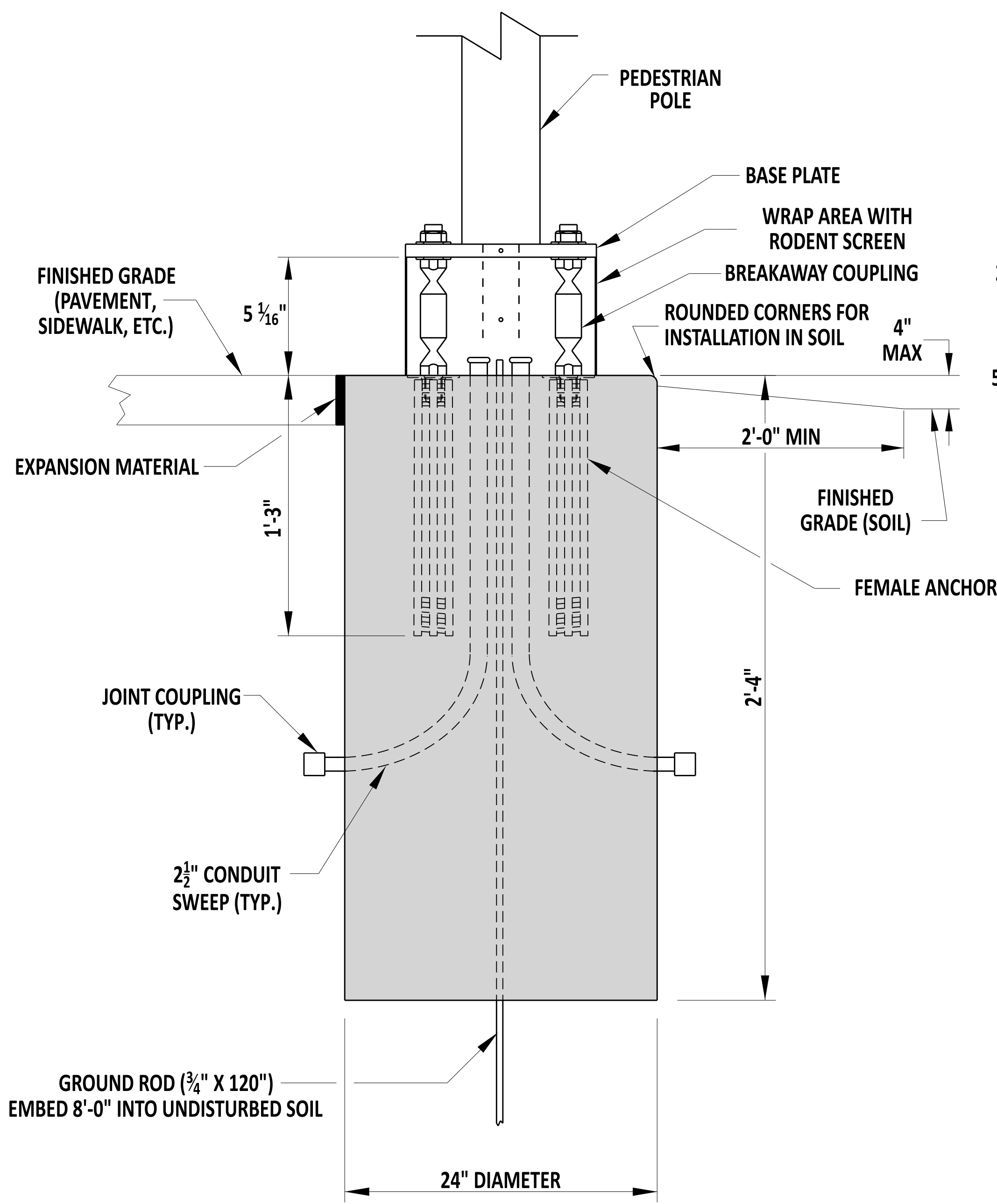
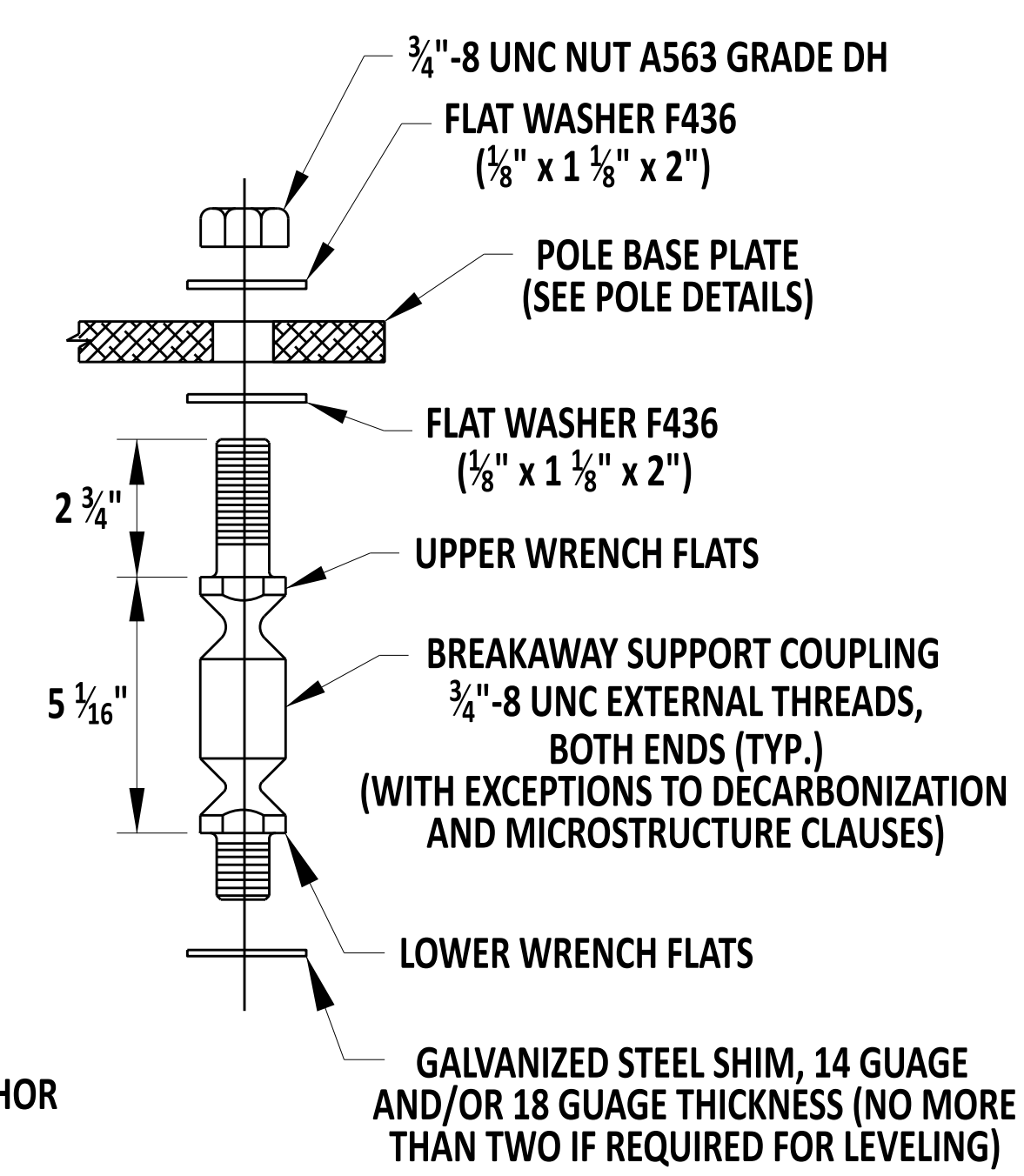


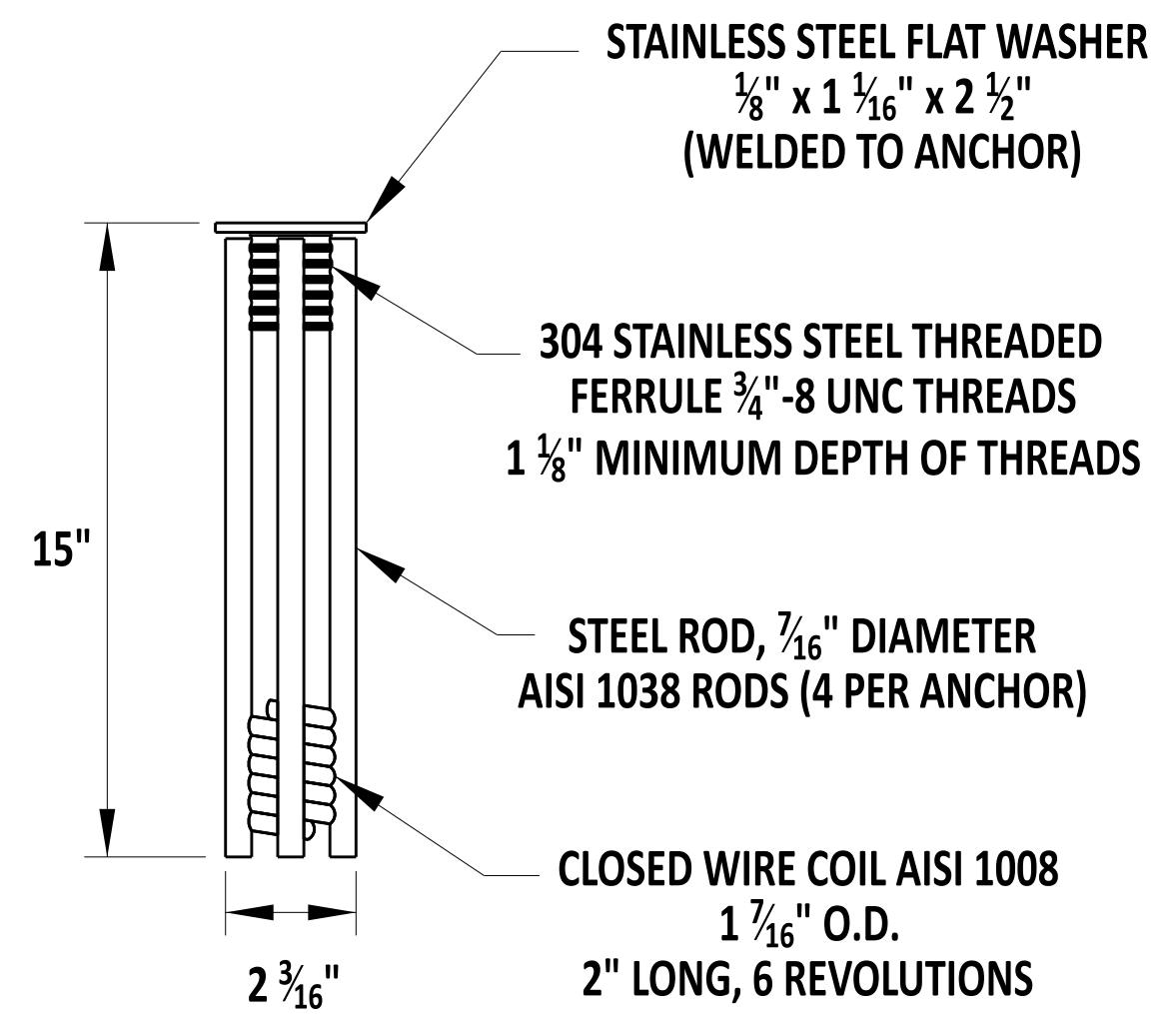
TYPICAL SECTION (BASE 4A)



TYPICAL SECTION (BASE 4B)



BREAKAWAY COUPLING DETAIL



ANCHOR DETAIL

NOTE:
 1). BOLT PATTERN TO BE PROVIDED BY DELDOT'S SIGNAL CONSTRUCTION INSPECTOR.
 2). TYPE 4A POLE BASES ARE TYPICALLY USED TO SUPPORT PEDESTAL POLES WITH PEDESTAL BREAKWAY BASES.

NOTE:
 1). BOLT PATTERN TO BE PROVIDED BY DELDOT'S SIGNAL CONSTRUCTION INSPECTOR.
 2). TYPE 4B POLE BASES ARE TYPICALLY USED TO SUPPORT ORNAMENTAL PEDESTAL POLES WITH BREAKWAY COUPLINGS.

	 ENGINEERING SUPPORT 12/22/2023 DATE	POLE BASES - TYPICAL SECTION (BASE 4A AND 4B) AND ANCHOR AND BREAKAWAY COUPLING			REVIEWED DEPUTY DIRECTOR - DESIGN 22 December 2023 DATE
	RECOMMENDED	STANDARD NO. T-5 (2024)	SHT. 5 OF 5	APPROVED CHIEF ENGINEER 01/11/2024 DATE	