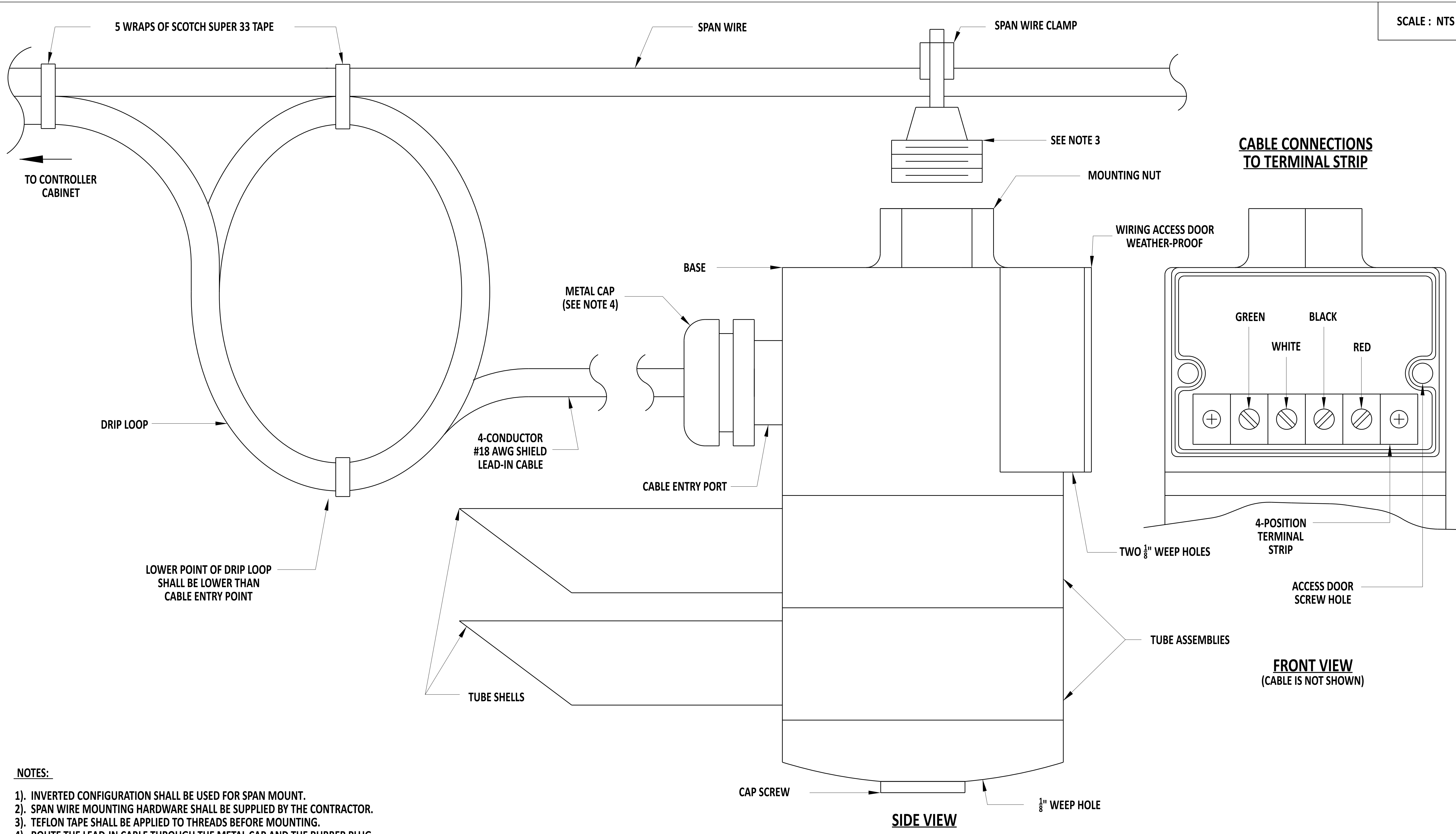


SCALE : NTS



**NOTES:**

- 1). INVERTED CONFIGURATION SHALL BE USED FOR SPAN MOUNT.
- 2). SPAN WIRE MOUNTING HARDWARE SHALL BE SUPPLIED BY THE CONTRACTOR.
- 3). TEFLON TAPE SHALL BE APPLIED TO THREADS BEFORE MOUNTING.
- 4). ROUTE THE LEAD-IN CABLE THROUGH THE METAL CAP AND THE RUBBER PLUG. REPLACE THE METAL CAP, SEALING THE CABLE ENTRY PORT. TIGHTEN THE METAL CAP SO THE CABLE WILL NOT SLIDE THROUGH THE RUBBER PLUG.



*Andrew Shott*  
 ENGINEERING SUPPORT      12/22/2023  
 DATE

**RECOMMENDED**

**EMERGENCY PREEMPTION RECEIVER - INVERTED MOUNT**

STANDARD NO.      T-14 (2024)      SHT.      2      OF      2

**REVIEWED**      *[Signature]*      22 December 2023  
 DEPUTY DIRECTOR - DESIGN      DATE

**APPROVED**      *[Signature]*      01/11/2024  
 CHIEF ENGINEER      DATE