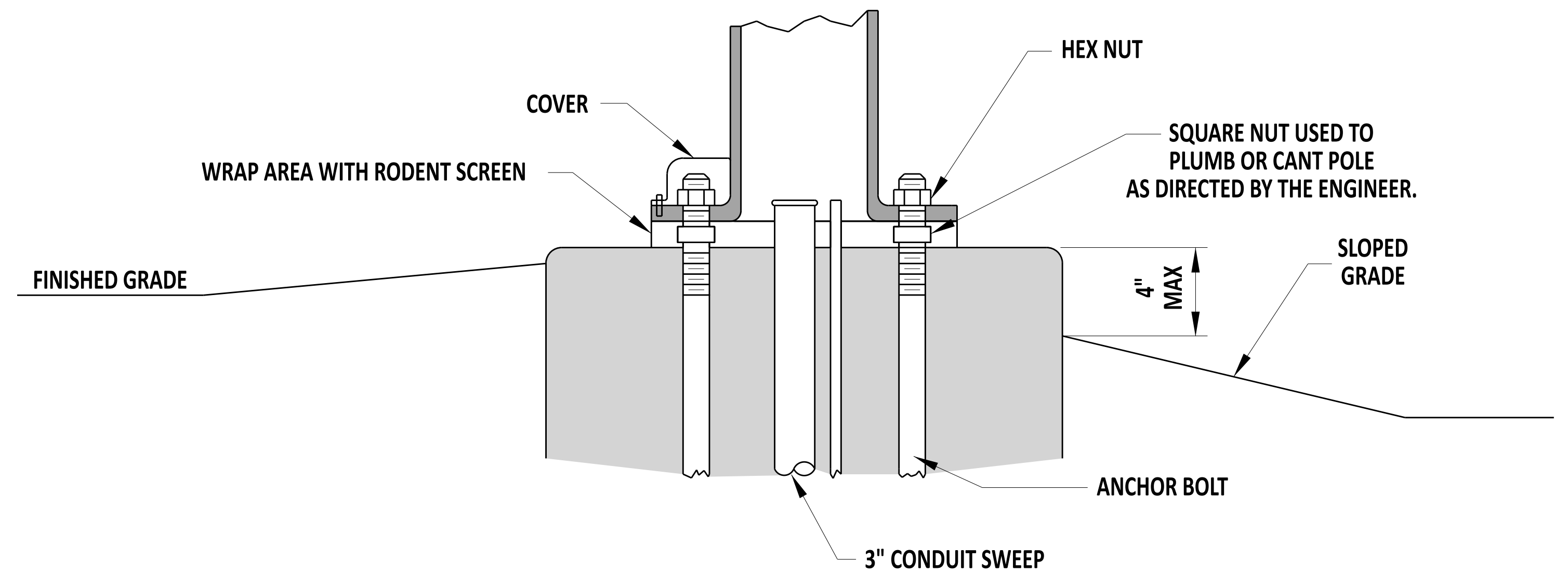


**TYPICAL SECTION (BASES 1,2,2A,2B,3,3A, AND 3B)**



**TYPICAL INSTALLATION (BASES 1,2,2A,2B,3,3A, AND 3B)**

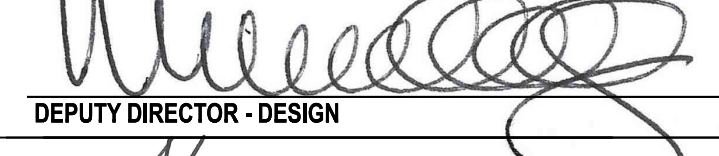
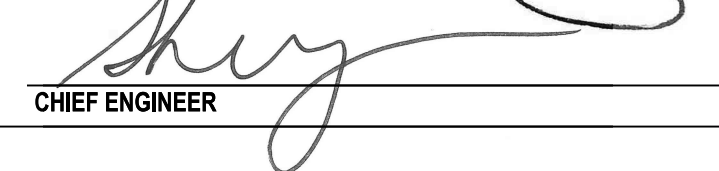
**NOTE:**

- 1). SEE POLE BASE DATA CHART ON DETAIL T-5, SHEETS 3 AND 4, FOR POLE BASE DIMENSIONS.
- 2). STRAIN POLES SHALL USE 2 1/4" ANCHOR BOLTS AND MAST ARMS UP TO 60' SHALL USE 2" ANCHOR BOLTS. ANCHOR BOLTS TO BE SUPPLIED BY THE DEPARTMENT.
- 3). MAST ARMS FROM 70-90' SHALL USE 2 1/2" ANCHOR BOLTS, SUPPLIED BY THE DEPARTMENT.
- 4). ALL OTHER POLE BASES NOT LISTED SHALL ADHERE TO MANUFACTURER AND DEPARTMENT STANDARDS.
- 5). PER MANUFACTURER SPECIFICATIONS AND DETAILS, THE CONTRACTOR SHALL ENSURE THAT THE FOLLOWING LENGTH OF THREADS ARE EXPOSED PER EACH POLE TYPE:
  - STRAIN: 10 1/2"
  - B (MAST): 9 1/2"
  - C (MAST): 11 1/4"
  - CAMERA: 7"
  - LIGHTING: 4 1/2"
- 6). MAXIMUM EXPOSED FOUNDATION DEPTH OF 4" AT FINISHED GRADE TO APPROACHING TRAFFIC.



  
 Andrew Shott  
 ENGINEERING SUPPORT  
 12/22/2023  
 DATE  
**RECOMMENDED**

**POLE BASES - TYPICAL SECTION AND INSTALLATION**  
**(BASES 1, 2, 2A, 2B, 3, 3A, AND 3B)**  
 STANDARD NO. T-5 (2024) SHT. 2 OF 5

**REVIEWED**  
  
 DEPUTY DIRECTOR - DESIGN  
 22 December 2023  
 DATE  
**APPROVED**  
  
 CHIEF ENGINEER  
 01/11/2024  
 DATE