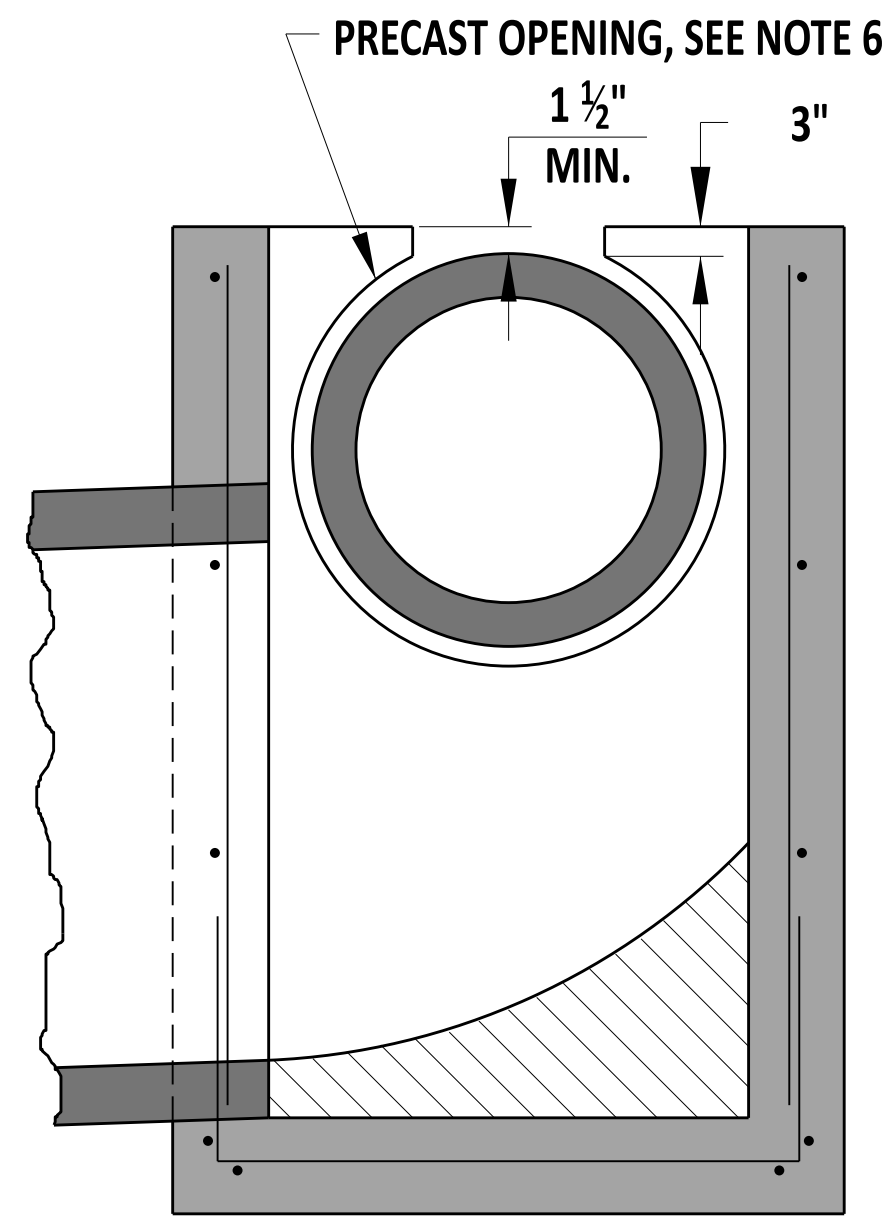


SECTION A-A



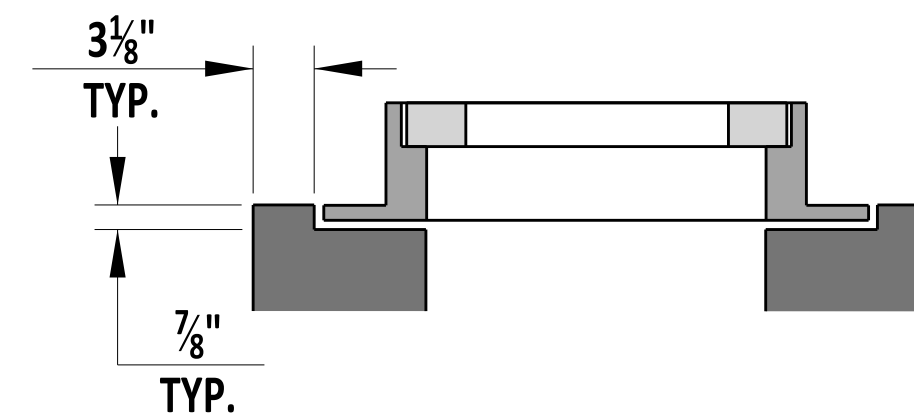
OPTIONAL PIPE OPENING DETAIL

SEE NOTE 5

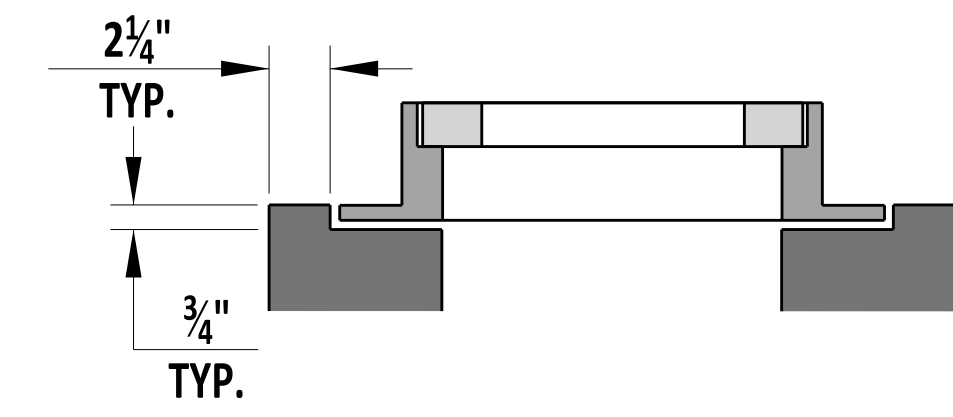
INLET BOX SCHEDULE		
L	W	FABRICATION TOLERANCE
17 5/8"	11 5/8"	+1"
24"	24"	+1"
34"	18"	-1"
34"	24"	-1"
48"	30"	+6"
48"	48"	+6"
66"	30"	+6"
66"	48"	+6"
66"	66"	+6"
72"	24"	-1"
72"	48"	-1"
72"	72"	-1"

* - THESE SIZES ARE TO BE USED FOR LAWN INLETS AND ARE NOT INTENDED TO BE USED IN THE TRAVELWAY. THE MAX DEPTH FOR THESE INLETS IS 4'. SEE NOTE 7 FOR REINFORCEMENT.
 ** - MAX DEPTH IS 4' FOR THIS DRAINAGE INLET.

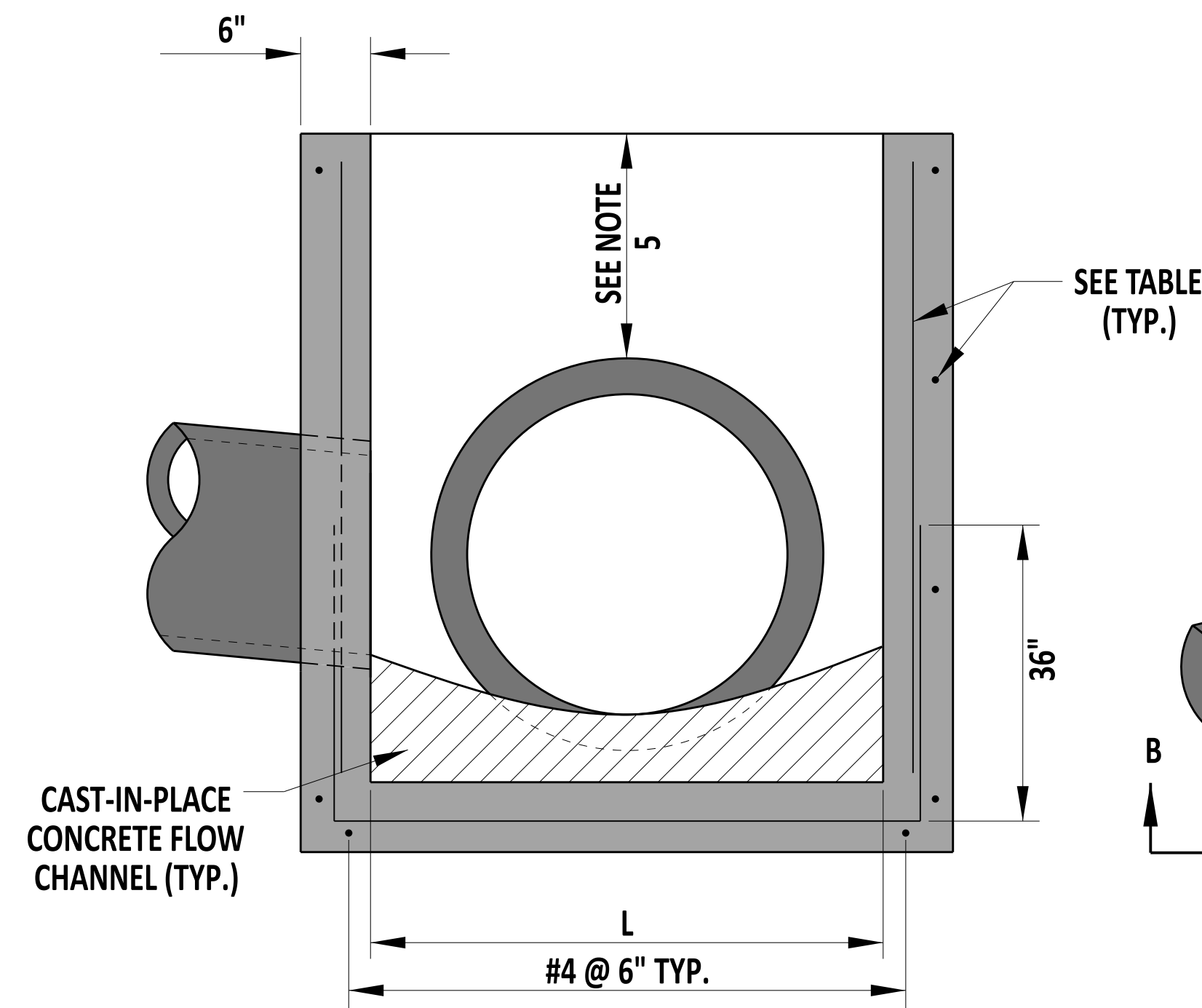
WALL REINFORCEMENT SCHEDULE		
INTERIOR WALL DIMENSION	AREA OF HORIZONTAL REINFORCEMENT PER FOOT	AREA OF VERTICAL REINFORCEMENT PER FOOT
	IN ²	IN ²
LESS THAN 4'	0.132	0.132
≥ 4'	0.163	0.132
≥ 4.5'	0.198	0.132
≥ 5'	0.239	0.132
≥ 5.5'	0.284	0.132



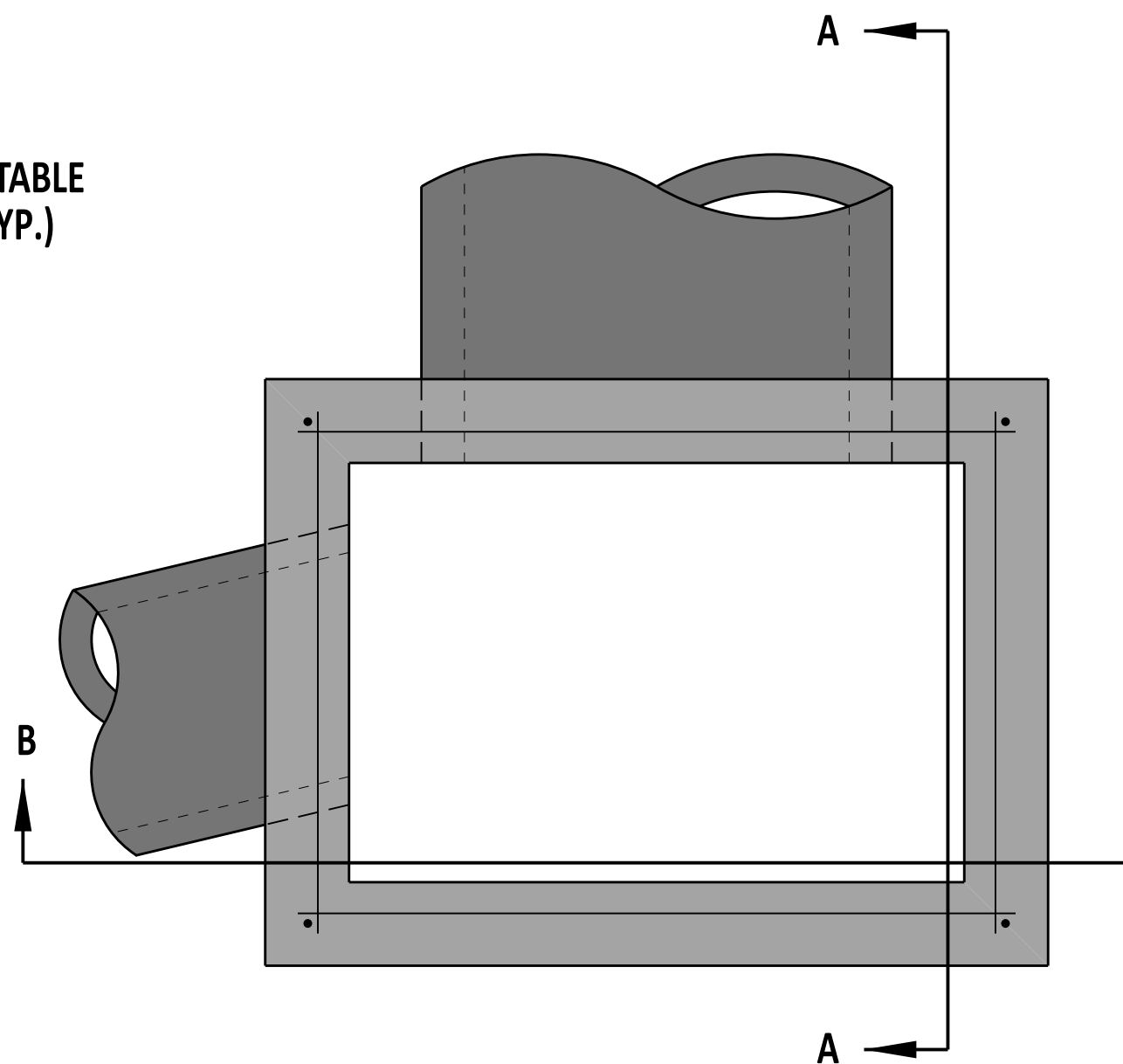
24" X 24" LAWN INLET BOX DETAIL



17 5/8" X 11 5/8" LAWN INLET BOX DETAIL



SECTION B-B



TOP VIEW

NOTES:

- 1). PROVIDE AND INSTALL INLET BOXES IN ACCORDANCE WITH SECTION 602 .
- 2). DO NOT INSTALL PIPES THROUGH ANY CORNER OF THE INLET BOX.
- 3). RISER SECTIONS MAY BE USED FOR DEEP INLET BOXES.
- 4). PIPES MAY BE INSTALLED NEAR OR THROUGH JOINTS FOR RISER SECTIONS.
- 5). WHEN THE COVER ABOVE THE PIPE IS LESS THAN 4" TO THE COVER SLAB OR TOP UNIT OPENING, THE PORTION OF BOX WALL ABOVE THE PIPE MAY BE REMOVED AS SHOWN IN THE OPTIONAL PIPE OPENING DETAIL. FORM AND FILL THE AREA ABOVE THE PIPE WITH HIGH-STRENGTH, NON-SHRINK GROUT MIXED WITH COARSE AGGREGATE IN A 1:1 RATIO BY WEIGHT.
- 6). WHEN INLET BOX IS PRECAST, PROVIDE A PIPE OPENING DIAMETER BETWEEN 3" AND 4" LARGER THAN OUTSIDE DIAMETER OF PIPE.
- 7). USE 4" X 4", W4 X W4 WELDED WIRE AS REINFORCEMENT FOR LAWN INLET BOXES.



Andrew Shott
 ENGINEERING SUPPORT
 12/22/2023
 DATE
RECOMMENDED

INLET BOX
 STANDARD NO. D-4 (2024)
 SHT. 1 OF 1

REVIEWED
 DEPUTY DIRECTOR - DESIGN
 22 December 2023
 DATE
APPROVED
 CHIEF ENGINEER
 01/11/2024
 DATE