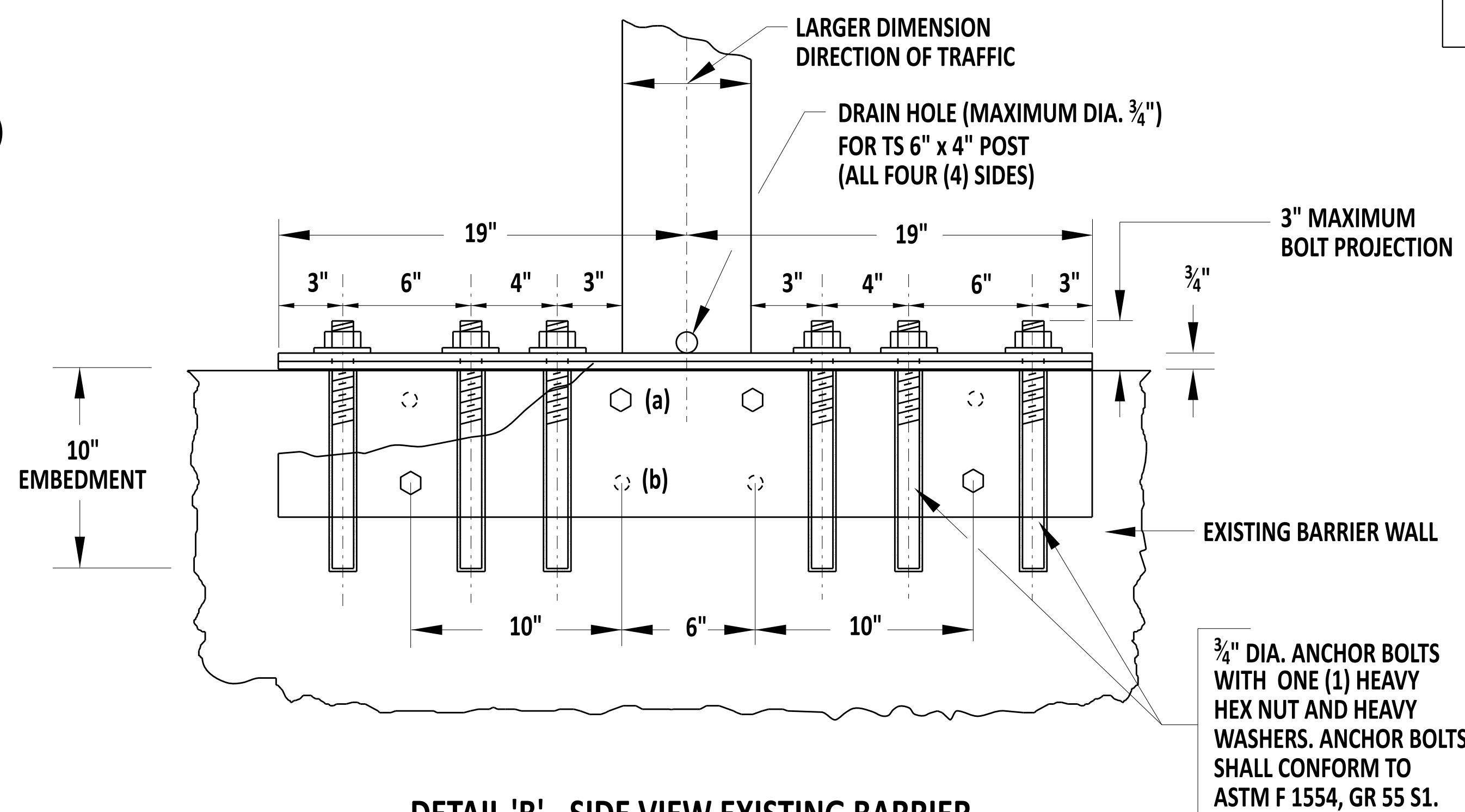


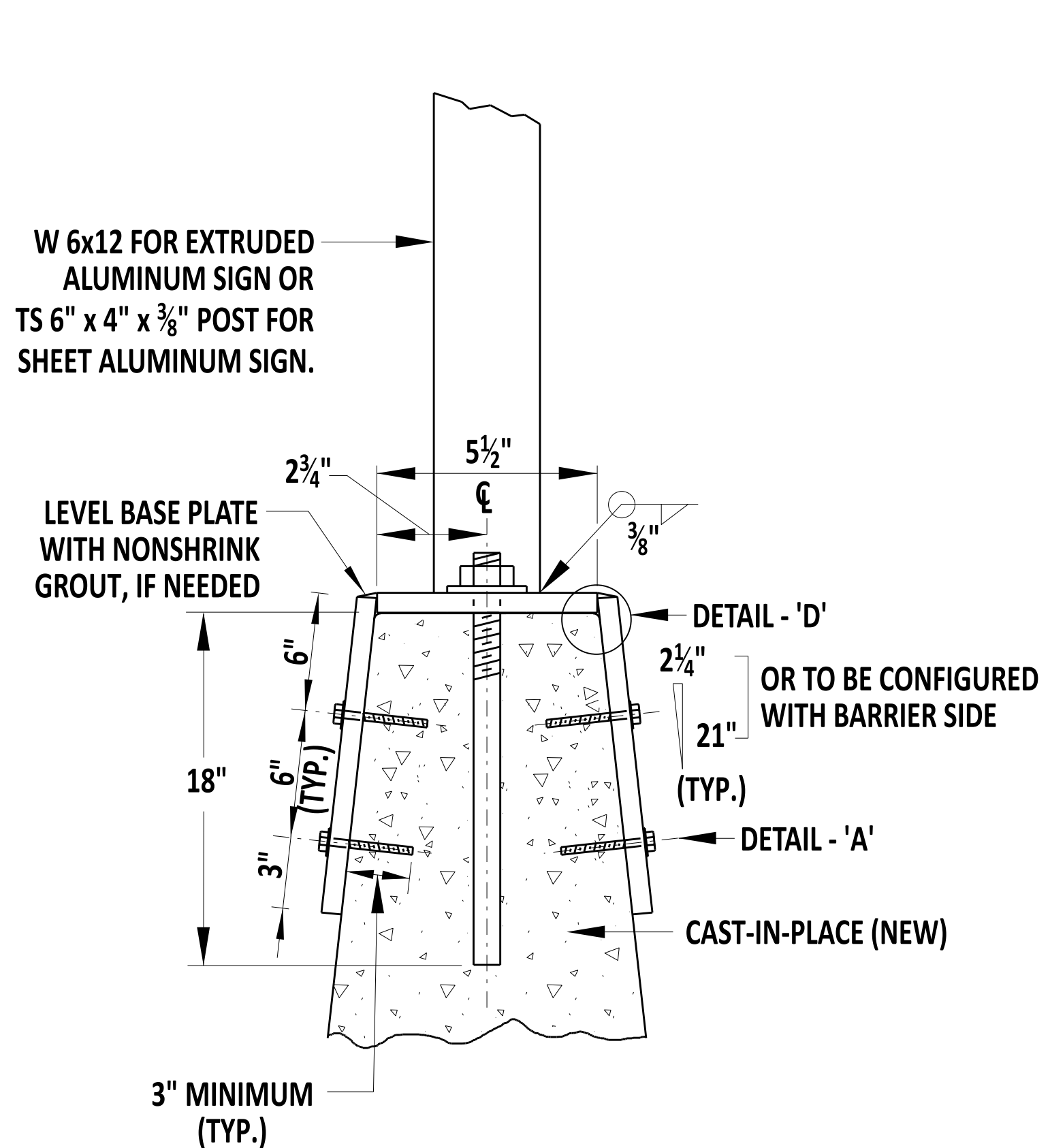
DETAIL 'A' - SIDE VIEW NEW BARRIER

- (a): 3/8" DIA. EXPANSION BOLTS WITH FLAT WASHERS 3" MIN. EMBEDMENT (TYP.) (NEAR FACE)
- (b): 3/8" DIA. EXPANSION BOLTS WITH FLAT WASHERS 3" MIN EMBEDMENT (TYP.) (FAR FACE)

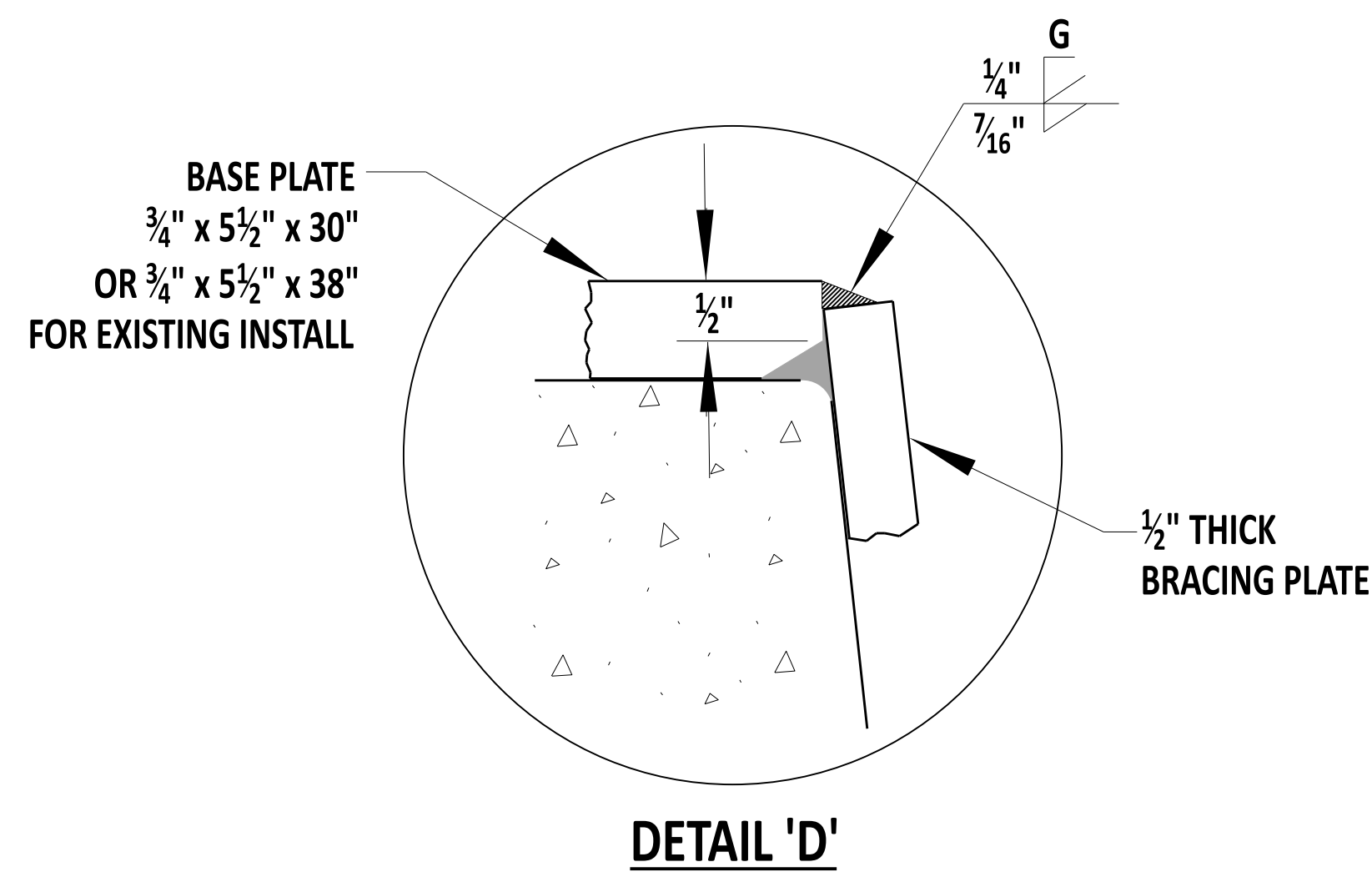


DETAIL 'B' - SIDE VIEW EXISTING BARRIER

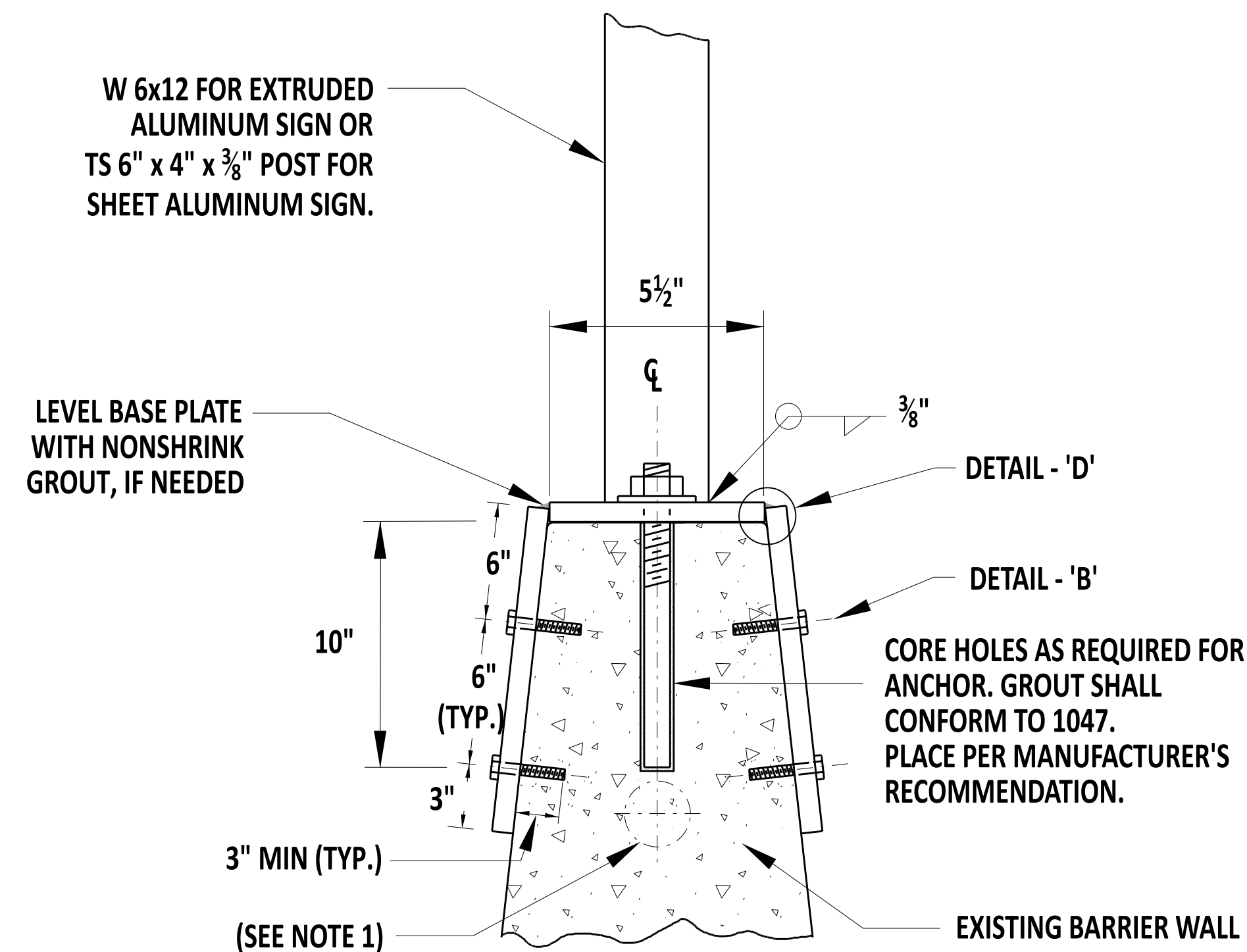
3/4" DIA. ANCHOR BOLTS WITH ONE (1) HEAVY HEX NUT AND HEAVY WASHERS. ANCHOR BOLTS SHALL CONFORM TO ASTM F 1554, GR 55 S1.



DETAIL 'A' NEW BARRIER



DETAIL 'D'



DETAIL 'A' EXISTING BARRIER

NOTES:

1. THE CONTRACTOR SHALL VERIFY ANY EXISTING CONDUIT BEFORE DRILLING HOLES. IF THE CONDUIT IS WITHIN 10" FROM THE TOP OF THE BARRIER, THE ENGINEER SHALL BE CONTACTED FOR ALTERNATE DESIGN.



Andrew Short
ENGINEERING SUPPORT
RECOMMENDED
12/22/2023
DATE

BARRIER MOUNTED SIGN
STANDARD NO. T-19 (2024)
SHT. 2 OF 3

REVIEWED
APPROVED
DEPUTY DIRECTOR - DESIGN
CHIEF ENGINEER
22 December 2023
DATE
01/11/2024
DATE