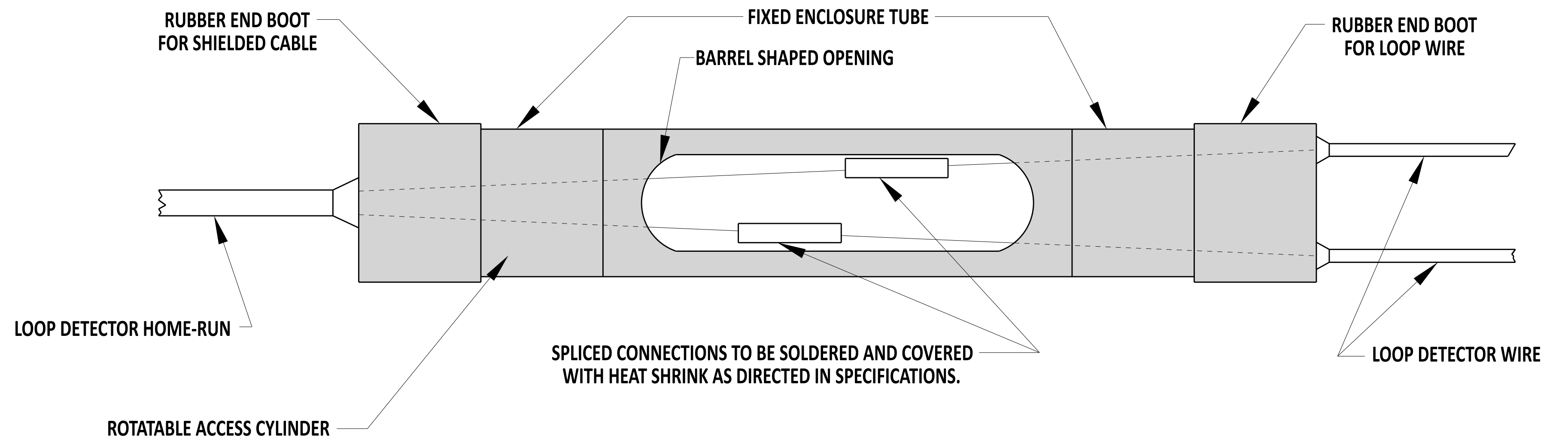


LOOP DETECTOR SAWCUT TYPICAL
REFER TO DETAIL T-8, SHEETS 1 THROUGH 4 FOR LOOP DETECTOR LEAD-IN INSTALLATION REQUIREMENTS.

**SECTION A-A
HOT-MIX SURFACE**



LOOP DETECTOR SPLICE

NOTES:

- 1). WHEN A PROPOSED LOOP DETECTOR SAWCUT CROSSSES A LATERAL ROADWAY JOINT OR OTHER OBSTRUCTION (VALVE COVER, MANHOLE, JUNCTION WELL, ETC.), LOOP DETECTOR INSTALLATION SHALL BE MODIFIED INTO TWO SEPARATE LOOP DETECTORS WHICH SHALL NOT TRAVERSE JOINTS OR OBSTRUCTION.
- 2). THE LOOPS SHALL BE PLACED IN THE CENTER OF THE LANE UNLESS NOTED OTHERWISE ON PLANS.
- 3). PRESENCE LOOP DETECTORS ARE TO BE PLACED 12" BEHIND THE EXISTING OR PROPOSED STOP LINE.
- 4). LOOP DETECTOR AND LEAD-IN SAWCUTS SHALL BE 5/8" WIDE.
- 5). DURING MULTIPLE LOOP INSTALLATIONS, ALL LOOP LEAD-INS TO THE JUNCTION WELL SHALL OFFSET 12" FROM EACH OTHER.



Andrew Short
ENGINEERING SUPPORT
RECOMMENDED
DATE: 12/22/2023

**WIRING INSTALLATION TYPICALS - LOOP DETECTOR SAWCUT TYPICAL,
HOT-MIX SURFACE TYPICAL SECTION, AND SPLICE KIT**
STANDARD NO. T-9 (2024) SHT. 1 OF 4

REVIEWED
[Signature]
DEPUTY DIRECTOR - DESIGN
22 December 2023
DATE

APPROVED
[Signature]
CHIEF ENGINEER
01/11/2024
DATE