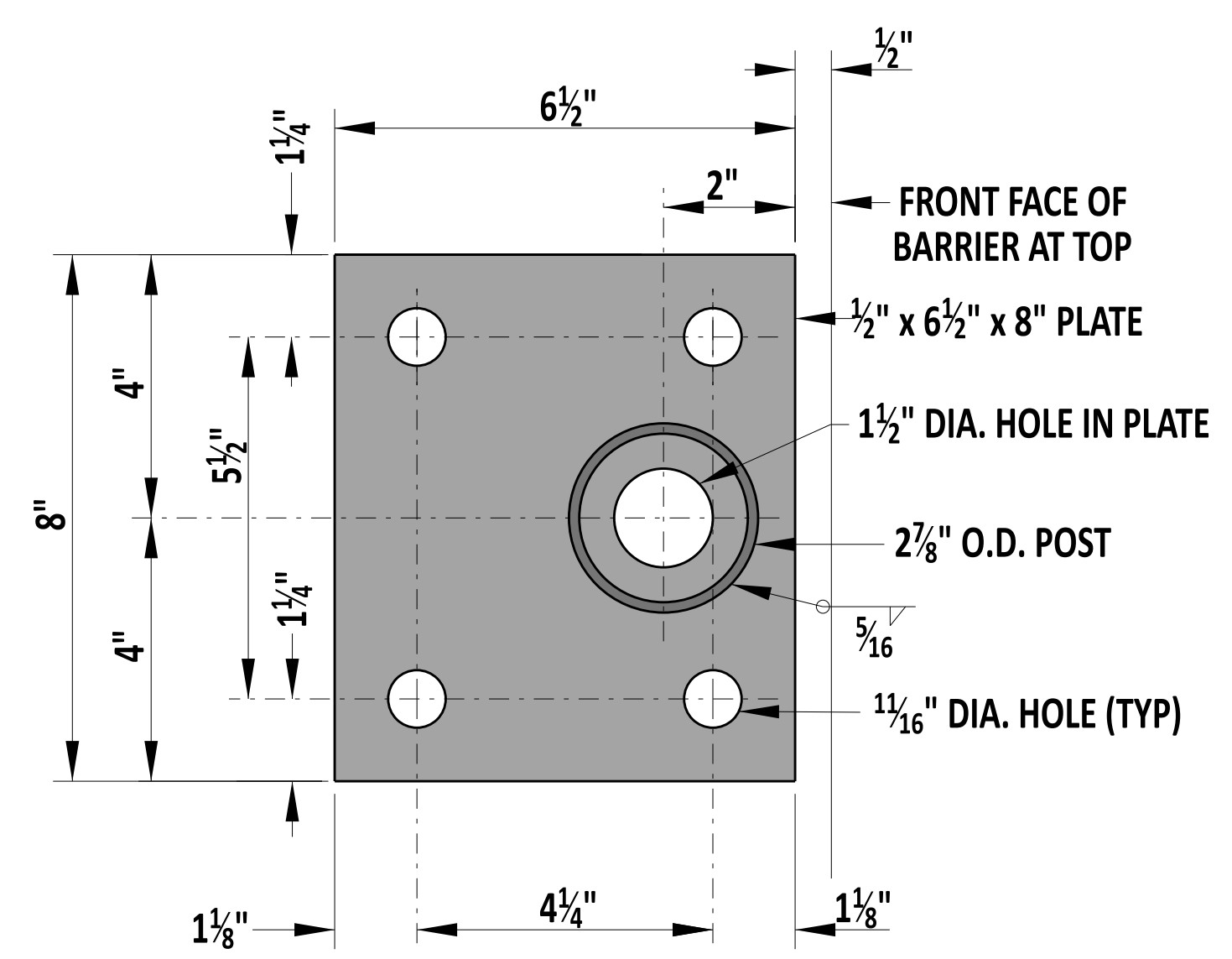
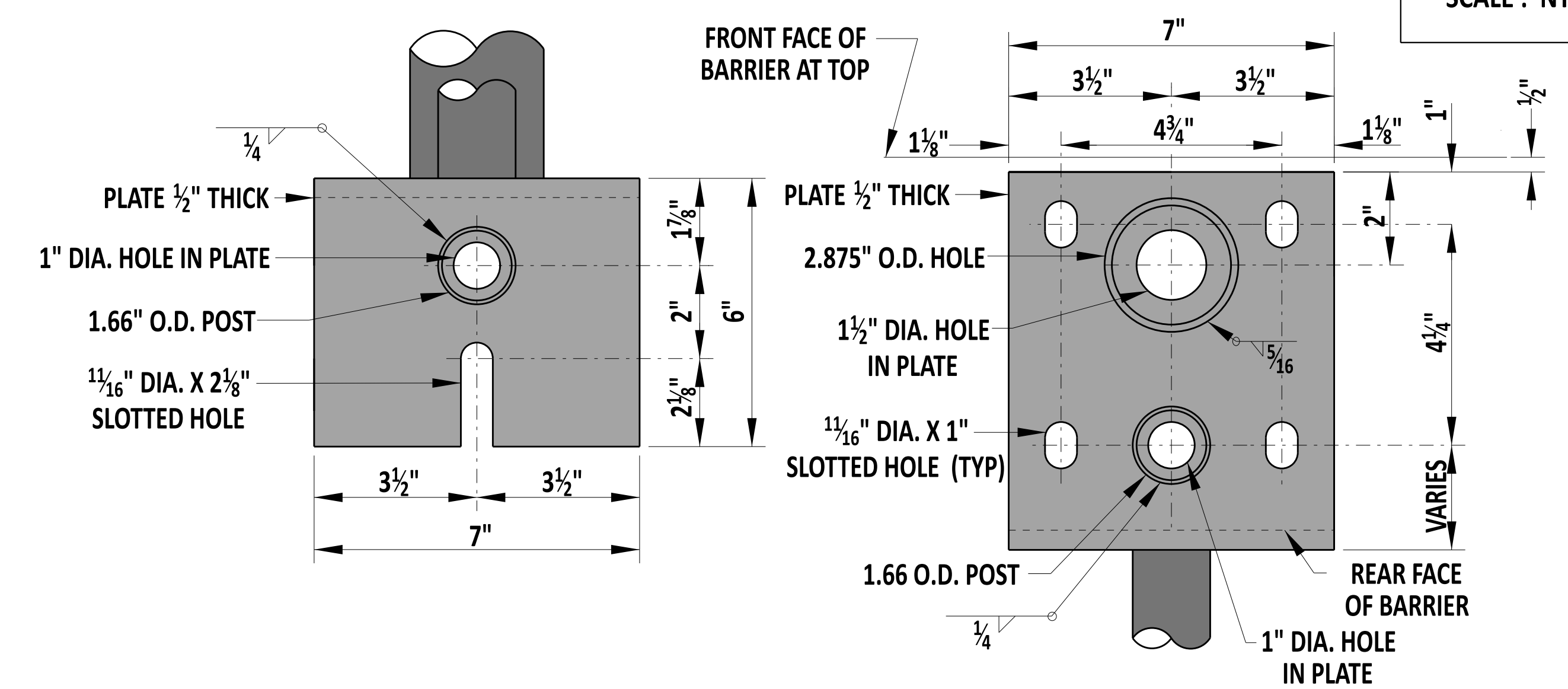


**TRUSS ROD ATTACHMENT**

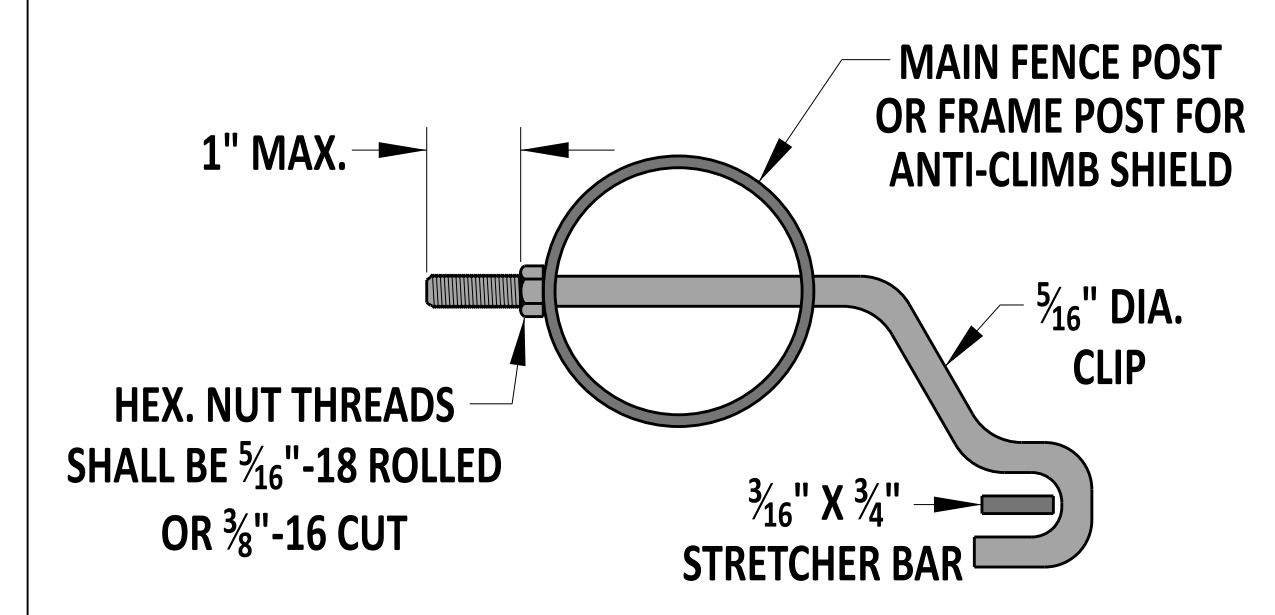


**DETAIL 'A'**

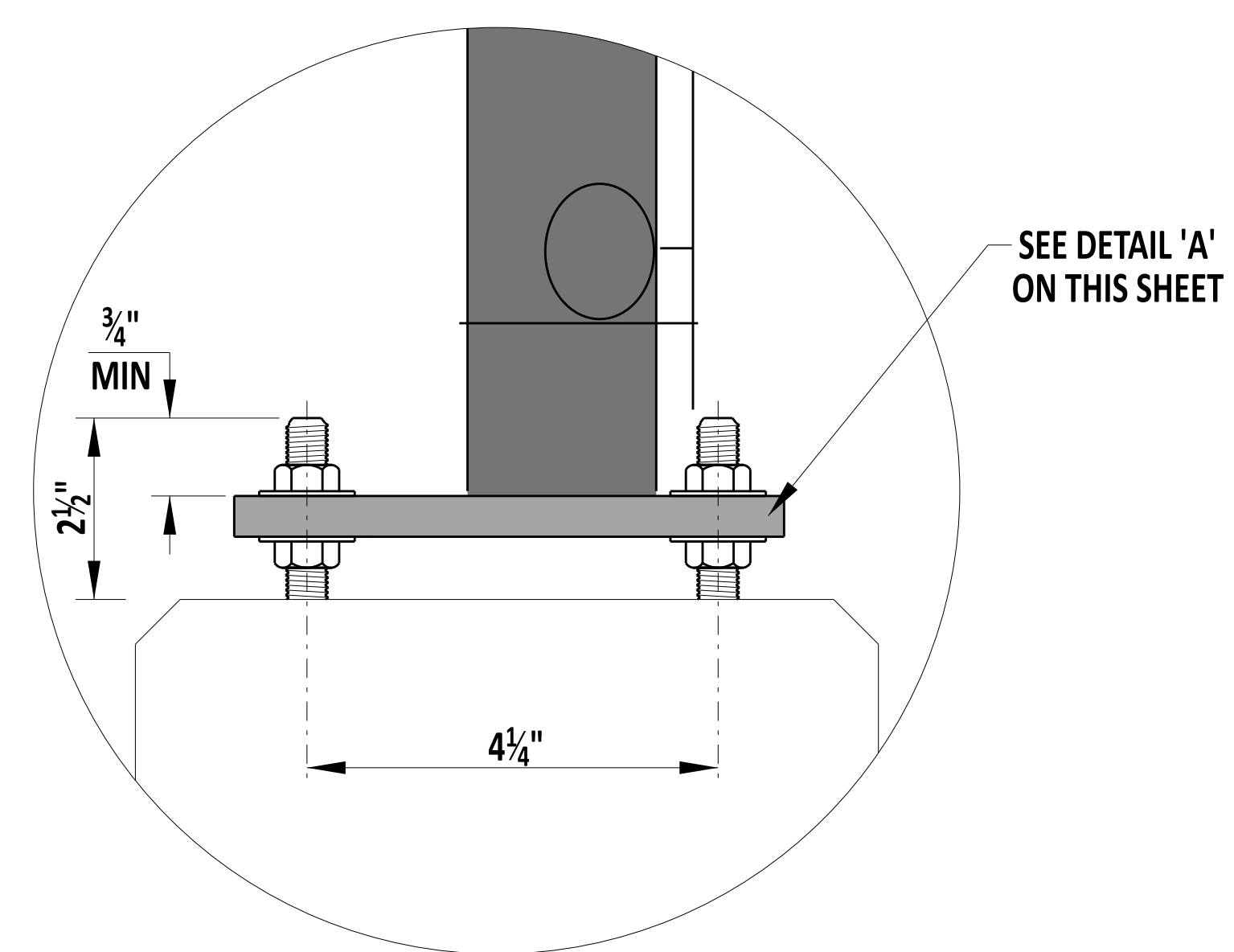


**SIDE VIEW**

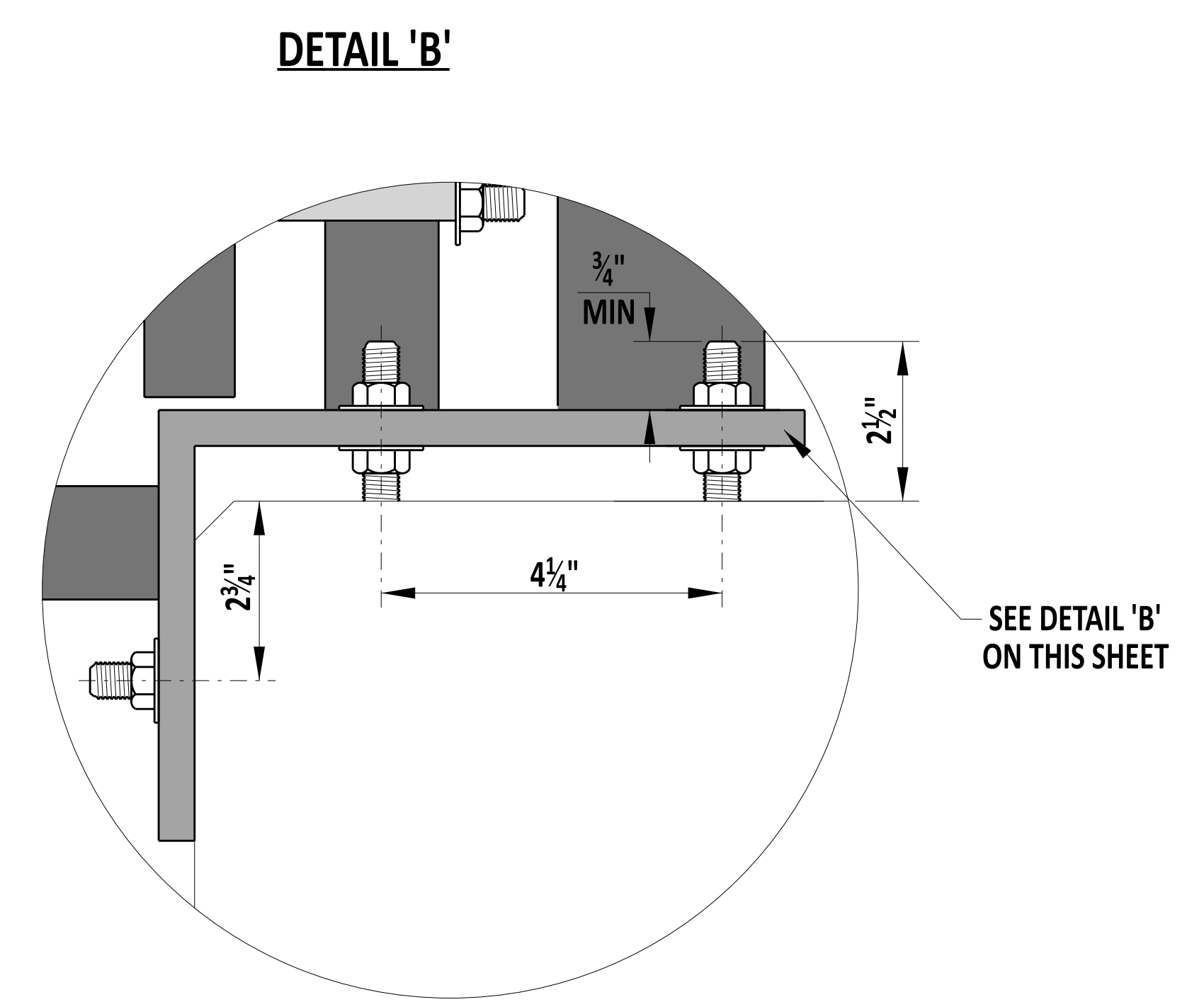
**PLAN VIEW**



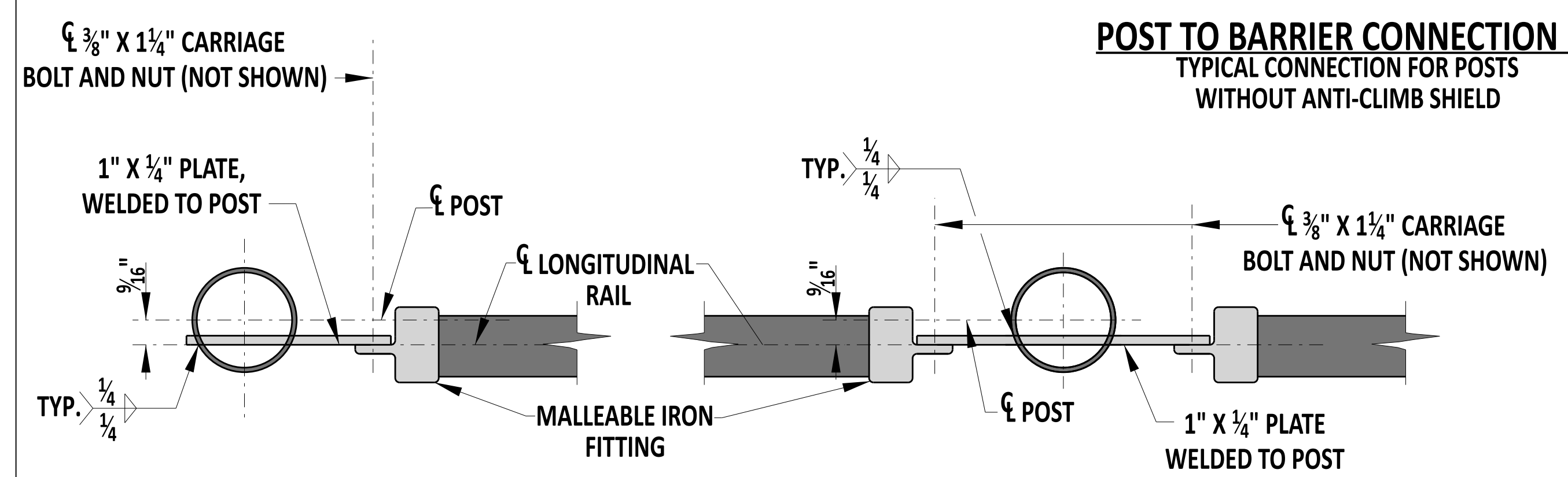
**STRETCHER BAR ATTACHMENT**



**POST TO BARRIER CONNECTION 'A'**  
TYPICAL CONNECTION FOR POSTS WITHOUT ANTI-CLIMB SHIELD



**POST TO BARRIER CONNECTION 'B'**  
TYPICAL CONNECTION FOR POSTS WITH ANTI-CLIMB SHIELD



**TOP LONGITUDINAL RAIL-POST ATTACHMENT**

**NOTES:**

- 1). POST SPACING TO BE DETERMINED BY THE CONTRACTOR AND INCLUDED IN THE WORKING DRAWINGS. EACH POST MUST BE A MINIMUM OF 1'-0" FROM ANY PARAPET JOINT.
- 2). SUBMIT WORKING DRAWINGS TO THE ENGINEER FOR REVIEW.



Andrew Shott  
ENGINEERING SUPPORT  
RECOMMENDED  
12/22/2023  
DATE

**BRIDGE SAFETY FENCE**  
STANDARD NO. M-10 (2024)  
SHT. 3 OF 3

REVIEWED  
DEPUTY DIRECTOR - DESIGN  
22 December 2023  
DATE

APPROVED  
CHIEF ENGINEER  
01/11/2024  
DATE