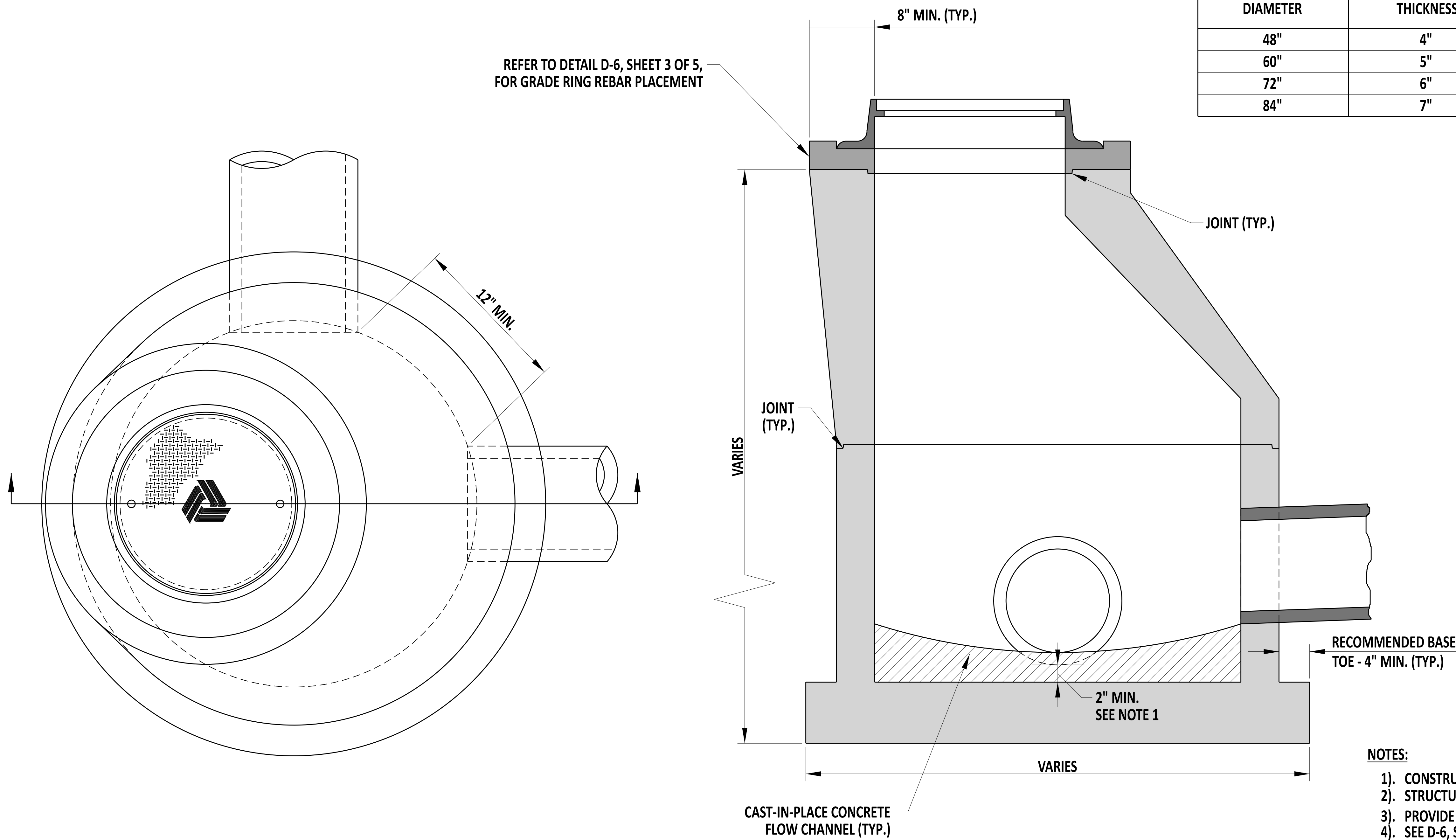


MINIMUM PRECAST ROUND MANHOLE REQUIREMENTS			
MANHOLE DIAMETER	MINIMUM WALL THICKNESS	CIRCUMFERENTIAL REINFORCEMENT* (PER VERTICAL FOOT)	BASE SLAB THICKNESS**
48"	4"	0.12 IN ²	6"
60"	5"	0.15 IN ²	8"
72"	6"	0.18 IN ²	8"
84"	7"	0.21 IN ²	8"

ADDITIONAL MINIMUM REQUIREMENTS:
*** MINIMUM VERTICAL REINFORCEMENT:** ASSEMBLE EACH LINE OF HORIZONTAL REINFORCEMENT INTO A CAGE CONTAINING SUFFICIENT VERTICAL BARS OR MEMBERS TO MAINTAIN THE REINFORCEMENT IN SHAPE AND POSITION WITHIN THE FORM.
**** MINIMUM BASE SLAB REINFORCEMENT:** PROVIDE A MINIMUM OF ONE LAYER IN EACH DIRECTION, LOCATED ABOVE THE MIDPOINT. PROVIDE MINIMUM AREA OF 0.12 SQ. IN. PER LINEAR FOOT IN EACH LAYER.
***** ADDITIONAL REINFORCEMENT AT OPENINGS:** PLACE 8 ADDITIONAL #4 BARS (2 HORIZ., 2 VERT. 4 DIAGONAL) AROUND EACH OPENING IN MANHOLE RISER OR BASE SECTIONS. MAKE BAR LENGTH = OPENING SIZE + 6".



- NOTES:**
- 1). CONSTRUCT ROUND MANHOLES IN ACCORDANCE WITH SECTION 602.
 - 2). STRUCTURE BASE TOE IS RECOMMENDED TO COUNTERACT BUOYANCY.
 - 3). PROVIDE A MINIMUM COVER OF 1½" FOR ALL REINFORCEMENT.
 - 4). SEE D-6, SHEET 3 OF 5, FOR GRADE RING DETAILS.
 - 5). SEE D-6, SHEET 5 OF 5, FOR ROUND COVER SLAB DETAILS.
 - 6). FABRICATOR IS RESPONSIBLE FOR LIFTING, HANDLING AND TRANSPORTATION STRESSES.



Andrew Short
 ENGINEERING SUPPORT 12/22/2023
 RECOMMENDED DATE

ROUND MANHOLE ASSEMBLY

STANDARD NO. D-6 (2024) SHT. 2 OF 5

REVIEWED *[Signature]* 22 December 2023
 DEPUTY DIRECTOR - DESIGN DATE

APPROVED *[Signature]* 01/11/2024
 CHIEF ENGINEER DATE